



PLAIN  
UNITS

LOOKBOOK  
SS 25



## PLAIN UNITS SPRING SUMMER 2025

The Spring Summer 2025 collection profiles a seamless blend of traditional craftsmanship and modern design, centred around themes of legacy and contentment and expressed through natural materials and a palette inspired by the serene hues of the sea, sky and earth.

Respecting cultural heritage, new season styles strike a harmonious balance between the richness of tradition and the simplicity of contemporary style, for styling in personal ways. Through the careful use of natural materials and time-honoured techniques, lightweight cotton blends, textured linen mixes and structured fabrics add both interest and durability to each style. Outdoorsy pieces draw inspiration from classic workwear: tech trousers and shorts are both functional and fashionable, detailed with cargo pockets and drawstrings and cut from lightweight tech four-way stretch and cotton twills.

A celebration of the pursuit of pleasure and ease in everyday life, colours are light and creamy, with shades of beige, truffle brown and black setting a sophisticated tone and pops of bright orange adding an uplifting edge. Soft shorts in watercolours offer a tactile touch for daywear; classic chinos are reimagined with a modern jogger-inspired shape and a crisp finish; refined shorts and trousers in linen elevate the everyday; and herringbone and check weaves introduce traditional textures with a contemporary twist. The season's suit trousers are tailored with a tapered silhouette, embodying a sleek, modern aesthetic that offers versatility for every occasion. The overall feel is effortless and elegant – with easy, everyday options that cater to all the needs of the







ALEXPL

PLAIN UNITS

# ALEXPL

Dessin 522

With their wide, tapered legs and lightweight stretch twill fabric, AlexPL are equal parts comfortable and stylish. An inner tie lets you adjust the fit while zipped pockets at the seam keep valuables safe. Designed in Copenhagen and made by specialists in China

Style

**4027**

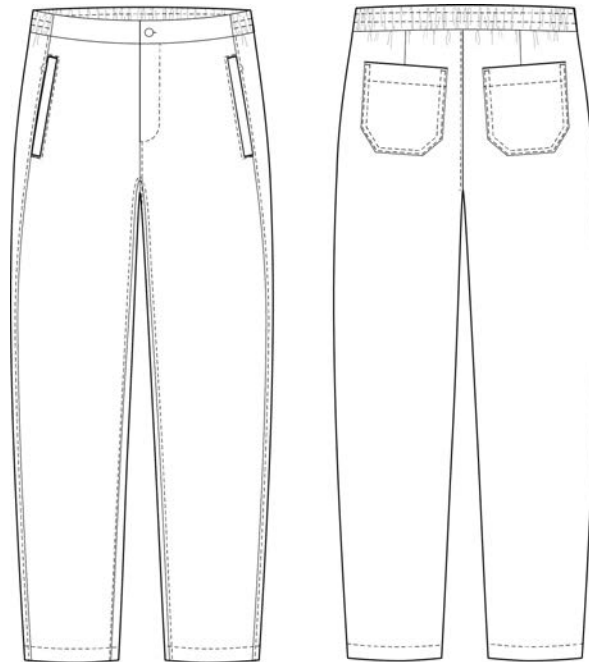
00303

Navy  
Blue

Composition:  
97% Cotton; 3% Elastane

Length:  
32, 34

Size: 28-38



TROUSERS  
STRAIGHT FIT  
MID-WAIST



# ALEXPL

Dessin 522

With their wide, tapered legs and lightweight stretch twill fabric, AlexPL are equal parts comfortable and stylish. An inner tie lets you adjust the fit while zipped pockets at the seam keep valuables safe. Designed in Copenhagen and made by specialists in China.

Style

**4043**

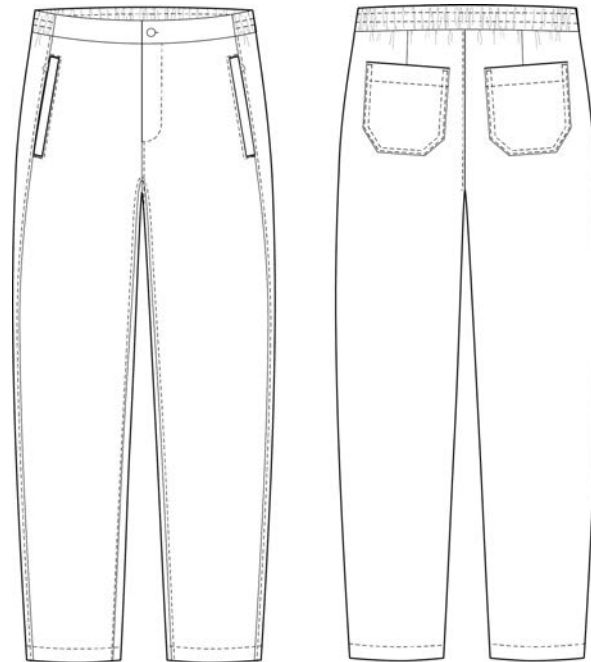
**31286**

Dried Herb  
Green

Composition:  
97% Cotton; 3% Elastane

Length:  
32, 34

Size: 28-38



TROUSERS  
STRAIGHT FIT  
MID-WAIST

# ALEXPL

Dessin 522

With their wide, tapered legs and lightweight stretch twill fabric, AlexPL are equal parts comfortable and stylish. An inner tie lets you adjust the fit while zipped pockets at the seam keep valuables safe. Designed in Copenhagen and made by specialists in China.

Style

4043

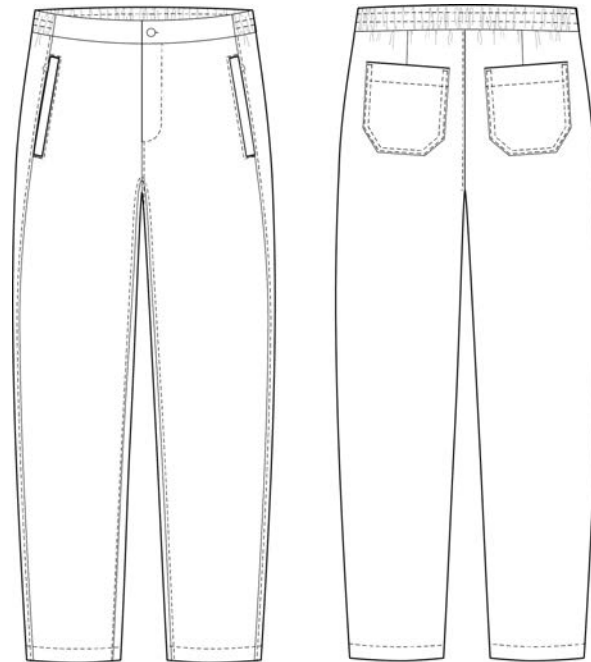
30876

Dark Sand

Composition:  
97% Cotton; 3% Elastane

Length:  
32, 34

Size: 28-38



TROUSERS  
STRAIGHT FIT  
MID-WAIST





# ERIKPL CARGO

PLAIN UNITS

# ERIKPL

Dessin 401

# CARGO

Inspired by hiking styles, ErikPL Cargo are cut from a tech, four-way stretch fabric for a comfortable, flexible fit that moves with you. The utilitarian design features practical cargo pockets, elasticated waist and a drawstring tie. A concealed elastic string at the hems let you taper their straight-leg silhouette. Designed in Copenhagen and made by specialists in China.

Style

4027

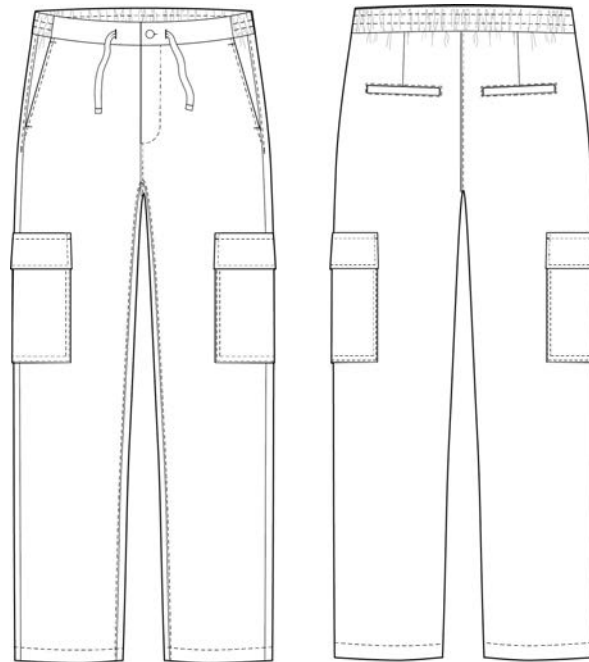
0003

Navy  
Blue

Composition:  
54% Nylon; 36% Viscose;  
10% Elastane

Length:  
32, 34

Size: 28-38



TROUSERS  
STRAIGHT FIT  
MID-WAIST



# ERIKPL

Dessin 401

# CARGO

Inspired by hiking styles, ErikPL Cargo are cut from a tech, four-way stretch fabric for a comfortable, flexible fit that moves with you. The utilitarian design features practical cargo pockets, elasticated waist and a drawstring tie. A concealed elastic string at the hems let you taper their straight-leg silhouette. Designed in Copenhagen and made by specialists in China.

Style

4043

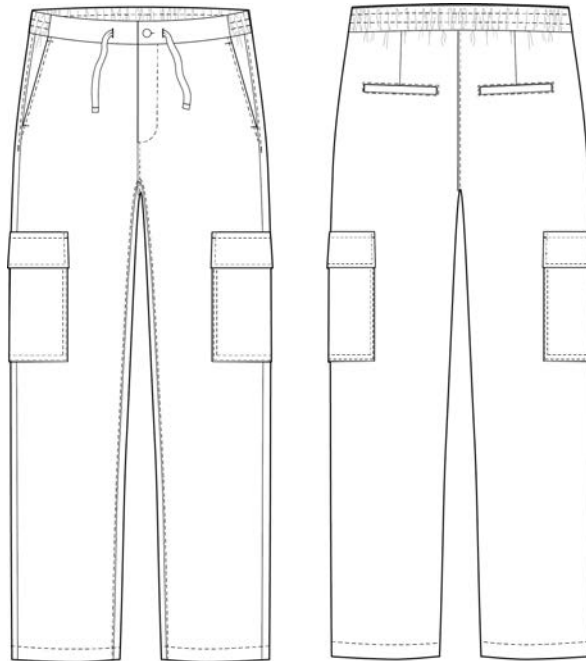
31085

Sea Salt

Composition:  
54% Nylon; 36% Viscose;  
10% Elastane

Length:  
32, 34

Size: 28-38



TROUSERS  
STRAIGHT FIT  
MID-WAIST



# ERIKPL

Dessin 401

## CARGO

Inspired by hiking styles, ErikPL Cargo are cut from a tech, four-way stretch fabric for a comfortable, flexible fit that moves with you. The utilitarian design features practical cargo pockets, elasticated waist and a drawstring tie. A concealed elastic string at the hems let you taper their straight-leg silhouette. Designed in Copenhagen and made by specialists in China.

Style

4043

31184

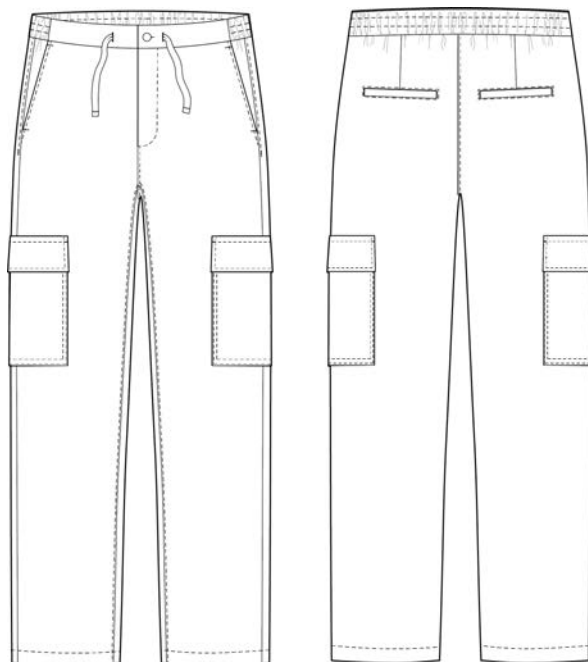
White

Pepper Sand

Composition:  
54% Nylon; 36% Viscose;  
10% Elastane

Length:  
32, 34

Size: 28-38



TROUSERS  
STRAIGHT FIT  
MID-WAIST





FELIXPL

PLAIN UNITS

# FELIXPL

Dessin 401

Cut from lightweight tech fabric with four-way stretch for a flexible fit, the FelixPL trousers are designed with an inner drawstring and a concealed zipper at right front pocket for a sleek finish. These straight-leg shaped trousers gives you room to move comfortably. Designed in Copenhagen, made by specialists in China.

Style

4027

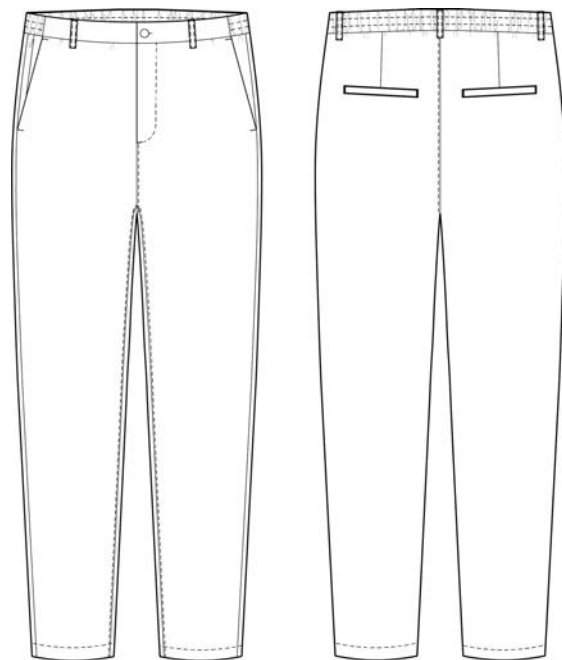
00603

Navy Blue

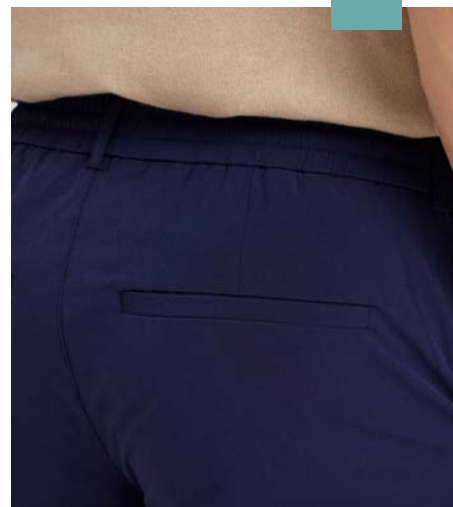
Composition:  
54% Nylon; 36% Viscose;  
10% Elastane

Length:  
32, 34

Size: 28-38



TROUSERS  
STRAIGHT FIT  
MID-WAIST



# FELIXPL

Dessin 401

Cut from lightweight tech fabric with four-way stretch for a flexible fit, the FelixPL trousers are designed with an inner drawstring and a concealed zipper at right front pocket for a sleek finish. These straight-leg shaped trousers gives you room to move comfortably. Designed in Copenhagen, made by specialists in China.

Style

4043

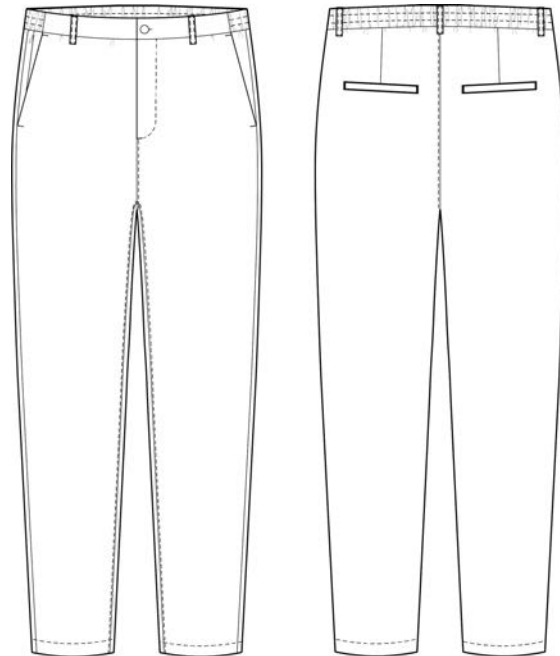
31084

White  
Pepper Sand

Composition:  
54% Nylon; 36% Viscose;  
10% Elastane

Length:  
32, 34

Size: 28-38



TROUSERS  
STRAIGHT FIT  
MID-WAIST



# FELIXPL

Dessin 401

Cut from lightweight tech fabric with four-way stretch for a flexible fit, the FelixPL trousers are designed with an inner drawstring and a concealed zipper at right front pocket for a sleek finish. These straight-leg shaped trousers gives you room to move comfortably. Designed in Copenhagen, made by specialists in China.

Style

4042

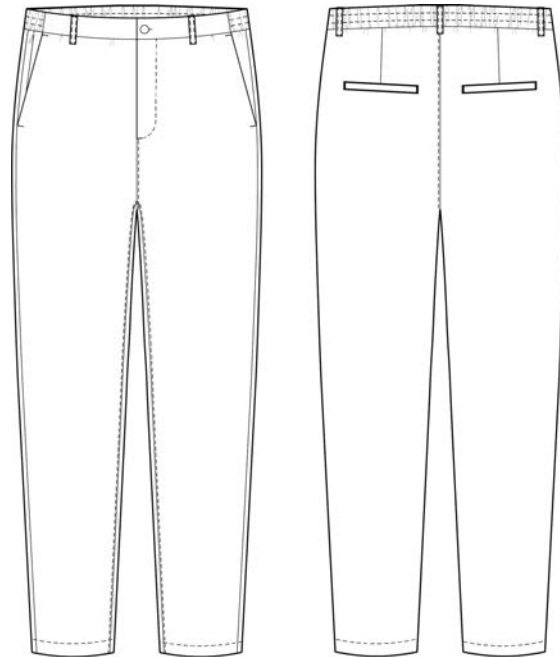
31985

Sea Salt  
Green

Composition:  
54% Nylon; 36% Viscose;  
10% Elastane

Length:  
32, 34

Size: 28-38



TROUSERS  
STRAIGHT FIT  
MID-WAIST





# HUGOPL

PLAIN UNITS

# HUGOPL

Dessin 820

HugoPL are tapered trousers in a casual look. Set on an elasticated waistband for comfort and flexibility, they're detailed with cargo-style pockets on the thighs as well as back welt pockets, giving you plenty of room to store essential items while on the go. Designed in Copenhagen and made by specialists in Turkey.

Style

4042

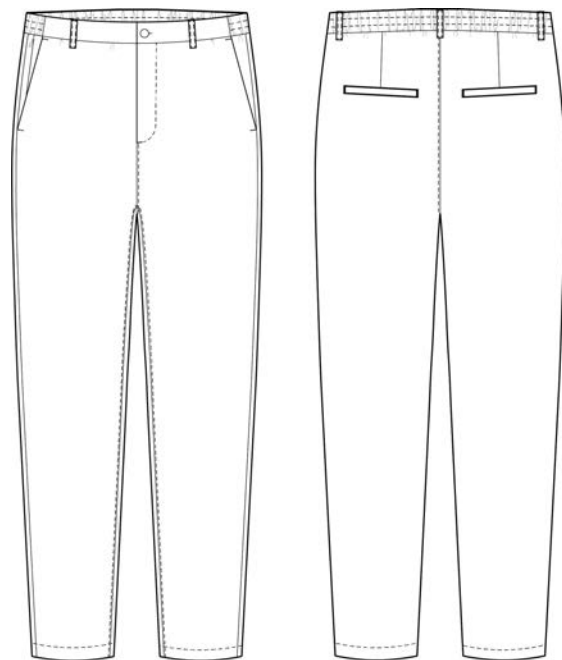
00401

Black

Composition:  
97% Cotton; 3% Elastane

Length:  
32, 34

Size: 28-38



TROUSERS  
TAPERED FIT  
MID-WAIST



# HUGOPL

Dessin 820

HugoPL are tapered trousers in a casual look. Set on an elasticated waistband for comfort and flexibility, they're detailed with cargo-style pockets on the thighs as well as back welt pockets, giving you plenty of room to store essential items while on the go. Designed in Copenhagen and made by specialists in Turkey.

Style

4042

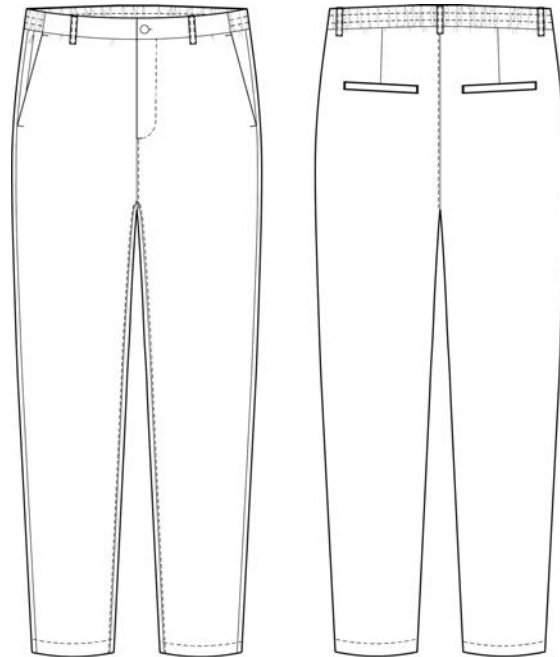
00401

Black

Composition:  
97% Cotton; 3% Elastane

Length:  
32, 34

Size: 28-38



TROUSERS  
TAPERED FIT  
MID-WAIST

Image coming



# JACKPL CARGO

PLAIN UNITS

# JACKPL

Dessin 868

# CARGO

Designed for a smooth fit against the body, JackPL Cargo is a relaxed style with subtly tailored details. Cut from softly structured jersey, the trousers feature generous cargo pockets with press stud fastenings for a new take on classic utility styles. Designed in Copenhagen and made by specialists in Turkey.

Style

4035

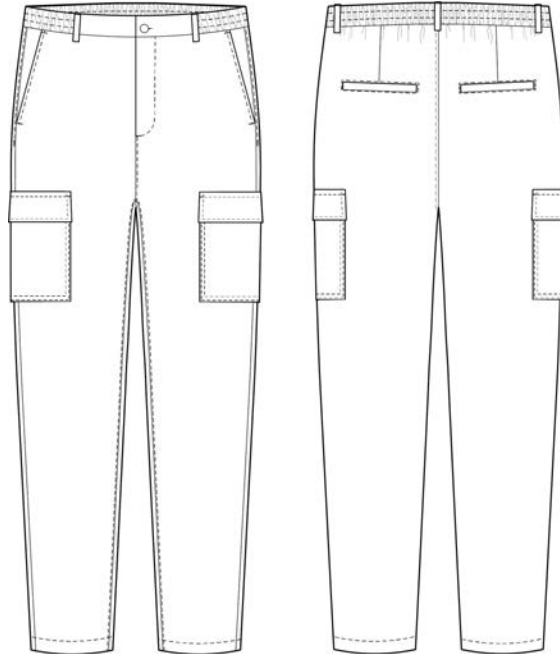
00201

Black

Composition:  
52% Cotton; 42%  
Polyamid; 6% Elastane

Length:  
32, 34

Size: 28-38



TROUSERS  
TAPERED FIT  
MID-WAIST

Image coming

# JACKPL

Dessin 868

# CARGO

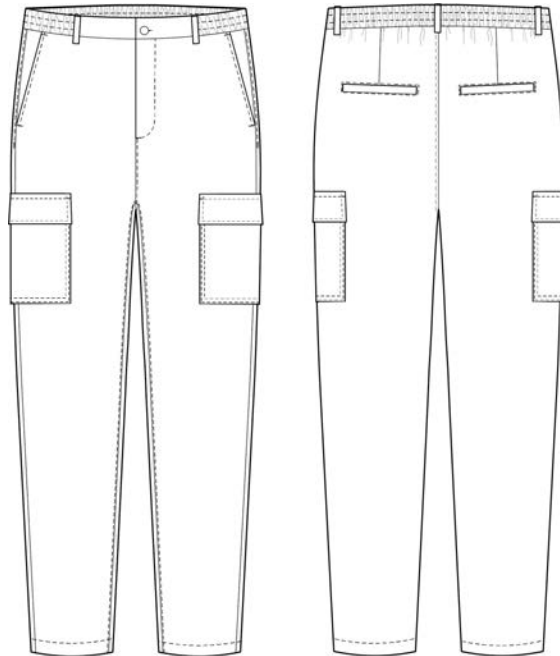
Designed for a smooth fit against the body, JackPL Cargo is a relaxed style with subtly tailored details. Cut from softly structured jersey, the trousers feature generous cargo pockets with press stud fastenings for a new take on classic utility styles. Designed in Copenhagen and made by specialists in Turkey.

Style

4041

00703

Navy Blue



Composition:  
52% Cotton; 42%  
Polyamid; 6% Elastane

Length:  
32, 34

Size: 28-38

TROUSERS  
TAPERED FIT  
MID-WAIST

Image coming



THEOPL

PLAIN UNITS

# THEOPL

Dessin 085

TheoPL 085 are tapered trousers designed to sit mid-waist and cut from soft plain-weave fabric. Detailed with the hallmarks of tailoring, including front slant pockets, back welt pockets and a concealed hook and bar fastening, the versatile pair feature an elasticated back waistband for added comfort and are equally suited to casual and formal occasions. Designed in Copenhagen and made by specialists in Turkey.

Style

4042

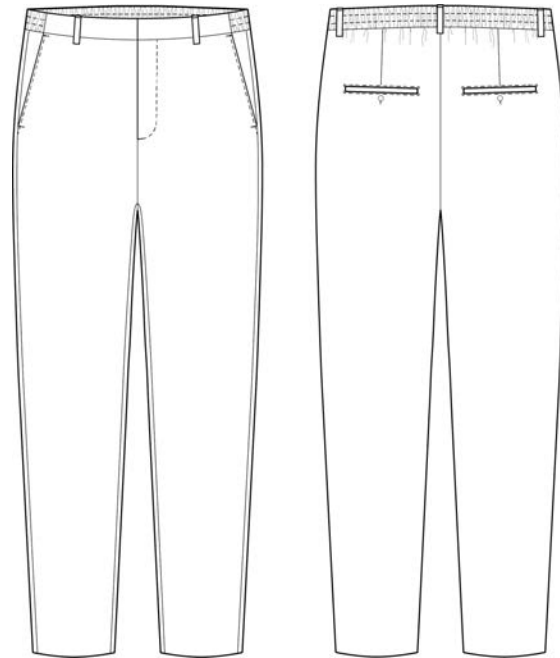
31783

Silver Sand  
Melange

Composition:  
47% Recycled  
Polyester; 47% Viscose;  
6% Elastane

Length:  
32, 34

Size: 28-38



TROUSERS  
TAPERED FIT  
MID-WAIST



# THEOPL

Dessin 114

TheoPL are tapered trousers designed to sit mid-waist. Detailed with the hallmarks of tailoring, including front slant pockets, back welt pockets and a concealed hook and bar fastening, the versatile pair feature an elasticated back waistband for added comfort and are equally suited to casual and formal occasions. Designed in Copenhagen and made by specialists in Turkey.

Style

4030

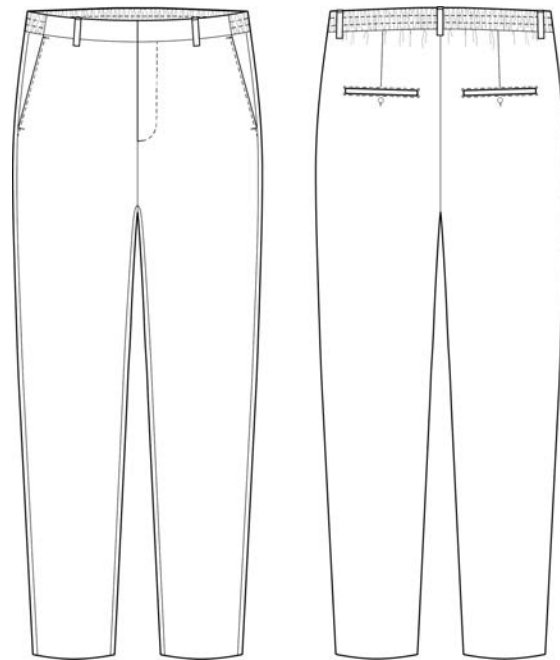
31375

Sky blue  
check

Composition:  
51% Viscose; 45%  
Polyester; 4% Elastane

Length:  
32, 34

Size: 28-38



TROUSERS  
TAPERED FIT  
MID-WAIST



# THEOPL

Dessin 570

TheoPL are tapered trousers designed to sit mid-waist. Detailed with the hallmarks of tailoring, including front slant pockets, back welt pockets and a concealed hook and bar fastening, the versatile pair feature an elasticated back waistband for added comfort and are equally suited to casual and formal occasions. Designed in Copenhagen and made by specialists in China.

Style

4030

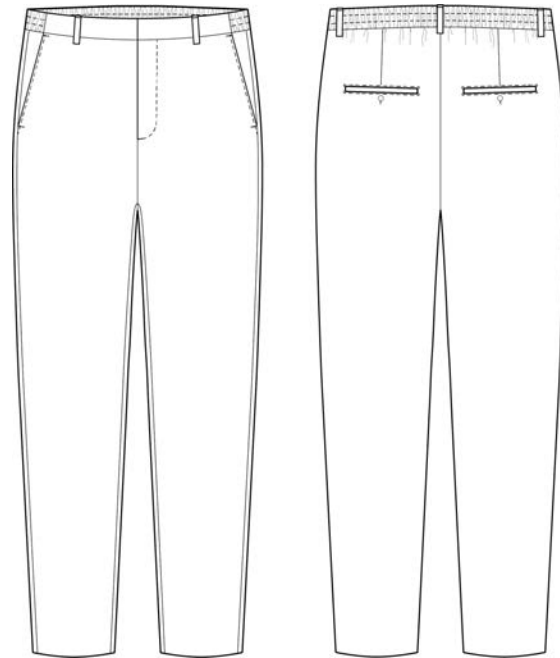
31177

Light Army  
Mini Grid

Composition:  
67% Recycled  
Polyester; 31% Viscose;  
2% Elastane

Length:  
32, 34

Size: 28-38



TROUSERS  
TAPERED FIT  
MID-WAIST

# THEOPL

Dessin 769

TheoPL 769 are tapered-fit trousers crafted from crisp linen-blend fabric in a casually elegant look. For a balance between looks and comfort, they have a standard, formal waistband at the front, an elasticated band at the back, two slant front pockets and two welt back pockets. Designed in Copenhagen and made by specialists in Turkey.

Style

4007

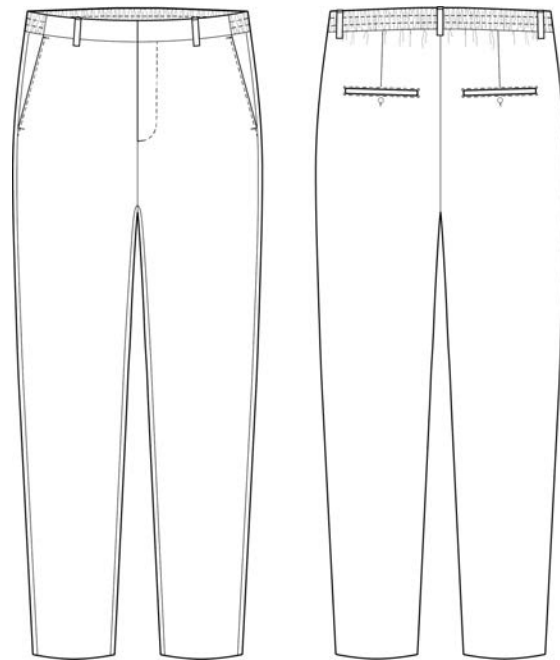
31983

Sand Linen

Composition:  
57% Linen; 27%  
Polyester; 14% Viscose;  
2% Elastane

Length:  
32, 34

Size: 28-38



TROUSERS  
TAPERED FIT  
MID-WAIST



# THEOPL

Dessin 769

TheoPL 769 are tapered-fit trousers crafted from crisp linen-blend fabric in a casually elegant look. For a balance between looks and comfort, they have a standard, formal waistband at the front, an elasticated band at the back, two slant front pockets and two welt back pockets. Designed in Copenhagen and made by specialists in Turkey.

Style

4042

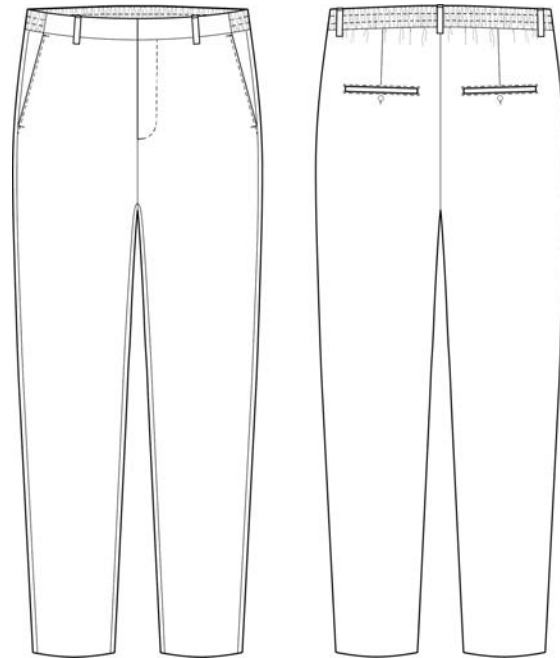
31071

Truffle Linen  
Brown

Composition:  
57% Linen; 27%  
Polyester; 14% Viscose;  
2% Elastane

Length:  
32, 34

Size: 28-38



TROUSERS  
TAPERED FIT  
MID-WAIST



# THEOPL

Dessin 769

TheoPL 769 are tapered-fit trousers crafted from crisp linen-blend fabric in a casually elegant look. For a balance between looks and comfort, they have a standard, formal waistband at the front, an elasticated band at the back, two slant front pockets and two welt back pockets. Designed in Copenhagen and made by specialists in Turkey.

Style

4042

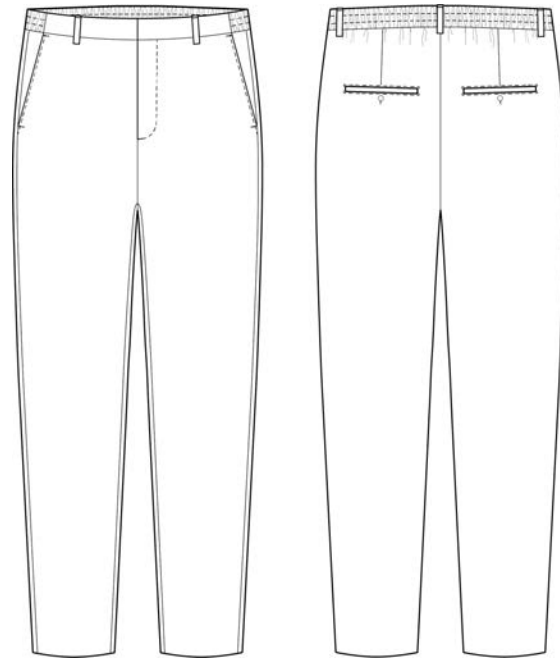
31170

Black Linen

Composition:  
57% Linen; 27%  
Polyester; 14% Viscose;  
2% Elastane

Length:  
32, 34

Size: 28-38



TROUSERS  
TAPERED FIT  
MID-WAIST



# THEOPL

Dessin 805

TheoPL are tapered trousers designed to sit mid-waist. Detailed with the hallmarks of tailoring, including front slant pockets, back welt pockets and a concealed hook and bar fastening, the versatile pair feature an elasticated back waistband for added comfort and are equally suited to casual and formal occasions. Designed in Copenhagen and made by specialists in Turkey.

Certified Global Recycled Standard (GRS), which verifies recycled content and tracks it from the source to the final product. Certified by ECOCERT Greenlife License 280147, this garment contains 63 % GRS-certified recycled polyester.

Style

4031

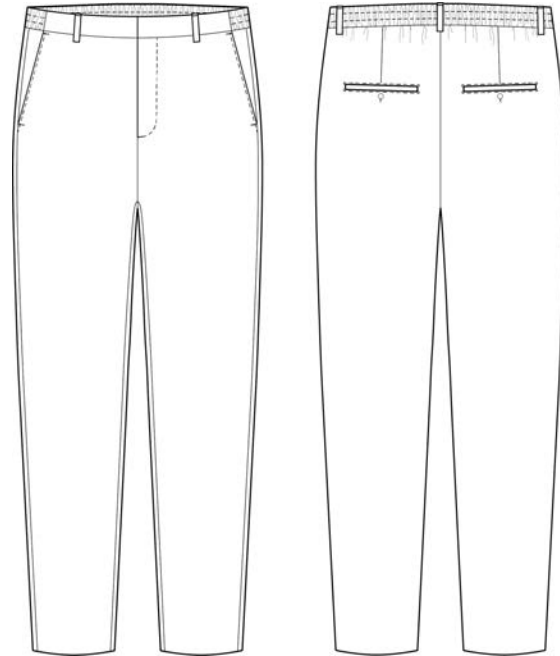
30269

Light Grey  
Melange

Composition:  
63% Recycled  
Polyester; 32% Viscose;  
5% Elastane

Length:  
32, 34

Size: 28-38



TROUSERS  
TAPERED FIT  
MID-WAIST



# THEOPL

Dessin 805

TheoPL are tapered trousers designed to sit mid-waist. Detailed with the hallmarks of tailoring, including front slant pockets, back welt pockets and a concealed hook and bar fastening, the versatile pair feature an elasticated back waistband for added comfort and are equally suited to casual and formal occasions. Designed in Copenhagen and made by specialists in Turkey.

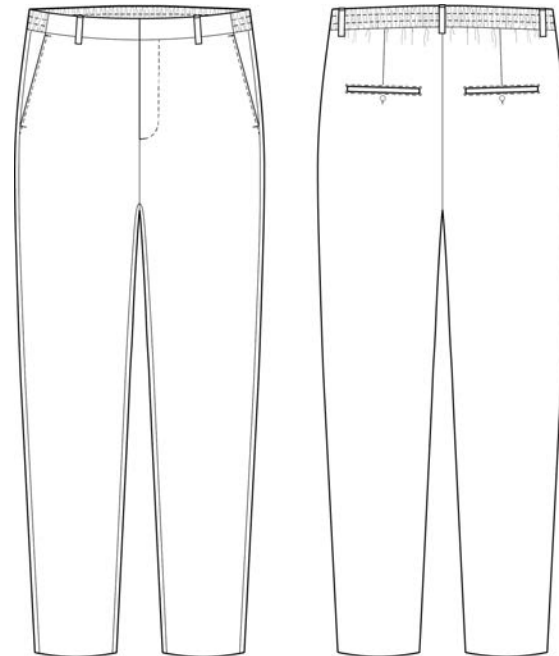
Certified Global Recycled Standard (GRS), which verifies recycled content and tracks it from the source to the final product. Certified by ECOCERT Greenlife License 280147, this garment contains 63 % GRS-certified recycled polyester.

Style

4043

31779

Sea Blue  
Melange



Composition:  
63% Recycled  
Polyester; 32% Viscose;  
5% Elastane

Length:  
32, 34

Size: 28-38

TROUSERS  
TAPERED FIT  
MID-WAIST

Image coming

# THEOPL

Dessin 905

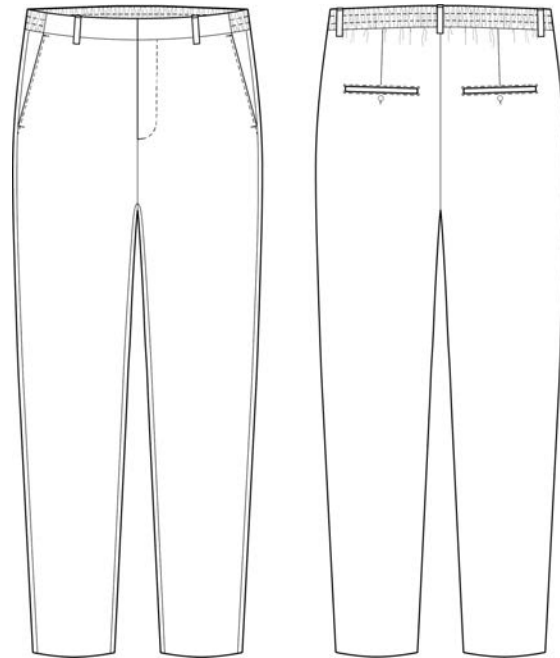
TheoPL are tapered trousers designed to sit mid-waist. Detailed with the hallmarks of tailoring, including front slant pockets, back welt pockets and a concealed hook and bar fastening, the versatile pair feature an elasticated back waistband for added comfort and are equally suited to casual and formal occasions. Designed in Copenhagen and made by specialists in Turkey.

Style

4031

~~315~~81

Steel Blue  
Melange



Composition:  
62% Recycled  
Polyester; 33% Viscose;  
5% Elastane

Length:  
32, 34

Size: 28-38

TROUSERS  
TAPERED FIT  
MID-WAIST

Image coming



# ERIKPL CARGO SHORTS

PLAIN UNITS

# ERIKPL CARGO

Dessin 401

## SHORTS

TheoPL 769 are tapered-fit trousers crafted from crisp linen-blend fabric in a casually elegant look. For a balance between looks and comfort, they have a standard, formal waistband at the front, an elasticated band at the back, two slant front pockets and two welt back pockets. Designed in Copenhagen and made by specialists in Turkey.

Style

4033

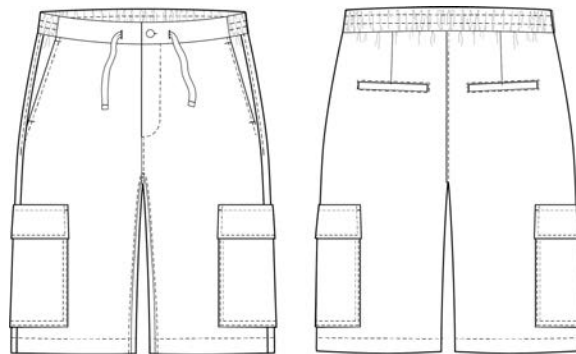
00503

Navy Blue

Composition:  
54% Nylon; 36%  
Viscose; 10% Elastane

Length:  
32, 34

Size: 28-38



TROUSERS  
STRAIGHT FIT  
MID-WAIST



# ERIKPL CARGO

Dessin 401

## SHORTS

TheoPL 769 are tapered-fit trousers crafted from crisp linen-blend fabric in a casually elegant look. For a balance between looks and comfort, they have a standard, formal waistband at the front, an elasticated band at the back, two slant front pockets and two welt back pockets. Designed in Copenhagen and made by specialists in Turkey.

Style

4044

31485

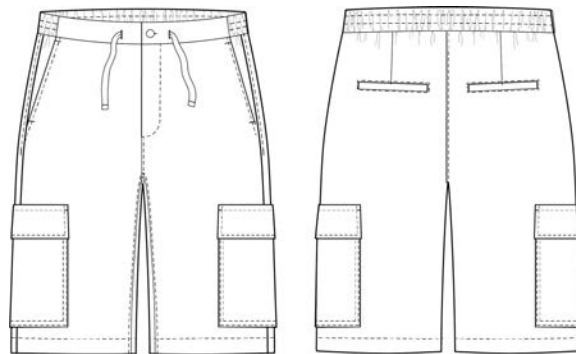
Sea Salt

Green

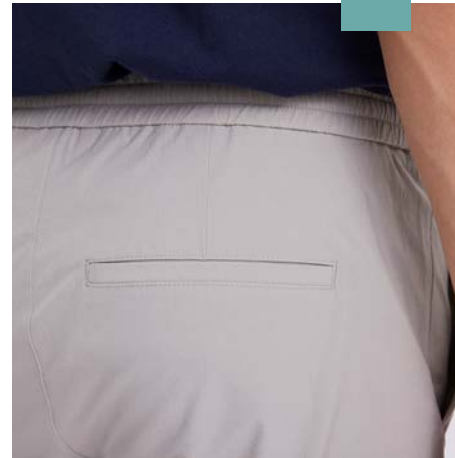
Composition:  
54% Nylon; 36%  
Viscose; 10% Elastane

Length:  
32, 34

Size: 28-38



TROUSERS  
STRAIGHT FIT  
MID-WAIST



# ERIKPL CARGO

Dessin 401

## SHORTS

TheoPL 769 are tapered-fit trousers crafted from crisp linen-blend fabric in a casually elegant look. For a balance between looks and comfort, they have a standard, formal waistband at the front, an elasticated band at the back, two slant front pockets and two welt back pockets. Designed in Copenhagen and made by specialists in Turkey.

Style

4044

31584

White

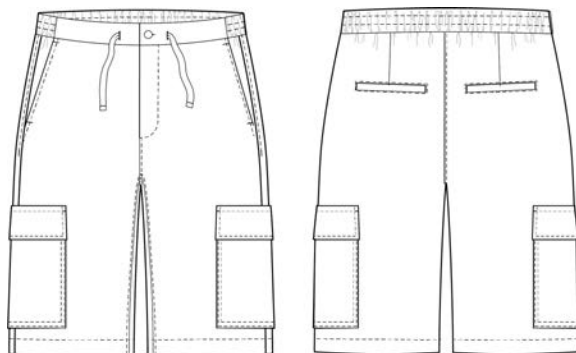
Pepper

Sand

Composition:  
54% Nylon; 36%  
Viscose; 10% Elastane

Length:  
32, 34

Size: 28-38



TROUSERS  
STRAIGHT FIT  
MID-WAIST





# THEOPL SHORTS

PLAIN UNITS

# THEOPL SHORTS

Dessin 310

TheoPL Shorts are tapered-fit shorts in a classic design. For a balance between looks and comfort, they have a standard, formal waistband at the front, an elasticated band at the back, two slant front pockets and two welt back pockets. Designed in Copenhagen and made by specialists in Turkey.

Style

4035

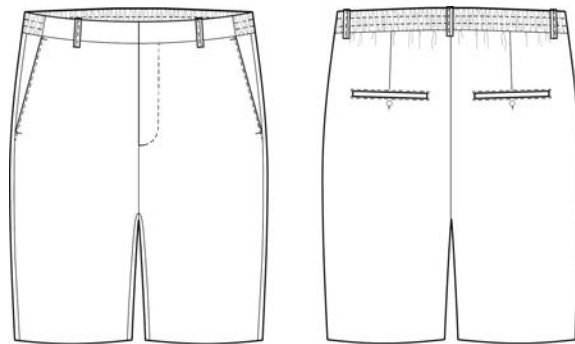
31187

Black wave

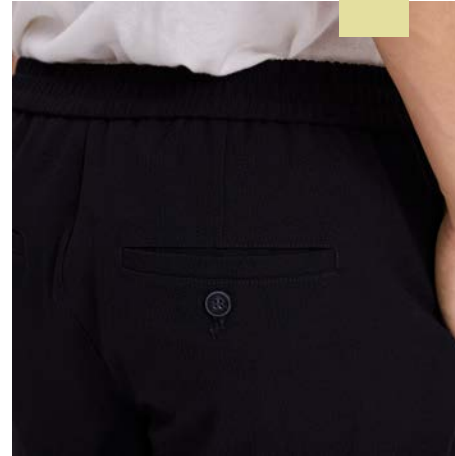
Composition:  
80% Polyester; 18%  
Viscose; 2% Elastane

Length:  
32, 34

Size: 28-38



TROUSERS  
TAPERED FIT  
MID-WAIST



# THEOPL SHORTS

Dessin 310

TheoPL Shorts are tapered-fit shorts in a classic design. For a balance between looks and comfort, they have a standard, formal waistband at the front, an elasticated band at the back, two slant front pockets and two welt back pockets. Designed in Copenhagen and made by specialists in Turkey.

Style

4045

30877

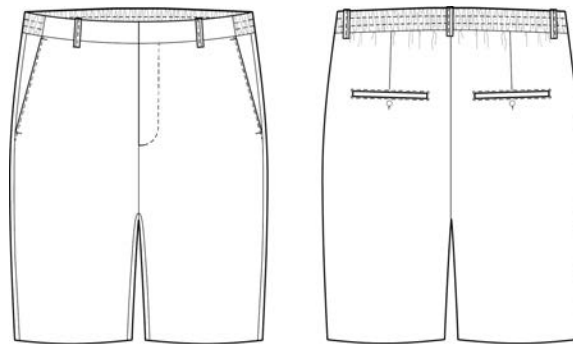
Navy wave

Dark Blue

Composition:  
80% Polyester; 18%  
Viscose; 2% Elastane

Length:  
32, 34

Size: 28-38



TROUSERS  
TAPERED FIT  
MID-WAIST



# TURIPL SHORTS

PLAIN UNITS

# TURIPL SHORTS

Dessin 012

TuriPL Shorts are comfort-fit shorts in a casual look. An uncomplicated design with no unnecessary details underlines their minimal and enduring style. Complete with two slant front pockets, two welt back pockets, adjustable drawstring at the waist, flexible waistband and split detail on the side hem. Designed in Copenhagen and made by specialists in China.

Style

4029

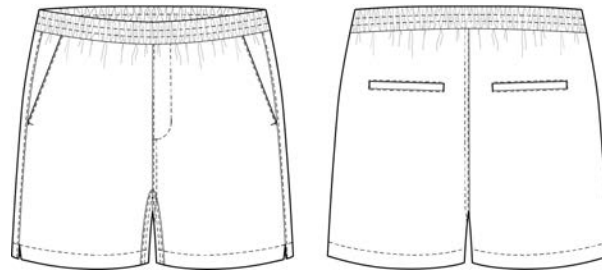
31166

Azure Green

Composition:  
88% Polyester; 10%  
Viscose; 2% Elastane

Length:  
32, 34

Size: 28-38



TROUSERS  
COMFORT FIT  
MID-WAIST



# TURIPL SHORTS

Dessin 012

TuriPL Shorts are comfort-fit shorts in a casual look. An uncomplicated design with no unnecessary details underlines their minimal and enduring style. Complete with two slant front pockets, two welt back pockets, adjustable drawstring at the waist, flexible waistband and split detail on the side hem. Designed in Copenhagen and made by specialists in China.

Style

4044

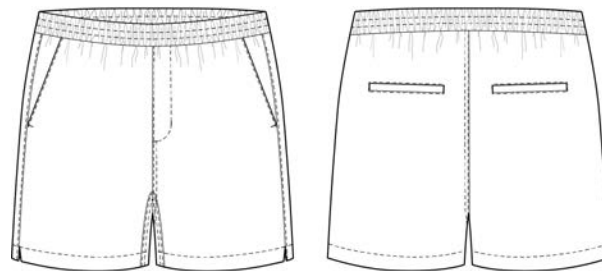
31769

Dive Blue

Composition:  
88% Polyester; 10%  
Viscose; 2% Elastane

Length:  
32, 34

Size: 28-38



TROUSERS  
COMFORT FIT  
MID-WAIST



# TURIPL SHORTS

Dessin 012

TuriPL Shorts are comfort-fit shorts in a casual look. An uncomplicated design with no unnecessary details underlines their minimal and enduring style. Complete with two slant front pockets, two welt back pockets, adjustable drawstring at the waist, flexible waistband and split detail on the side hem. Designed in Copenhagen and made by specialists in China.

Style

4044

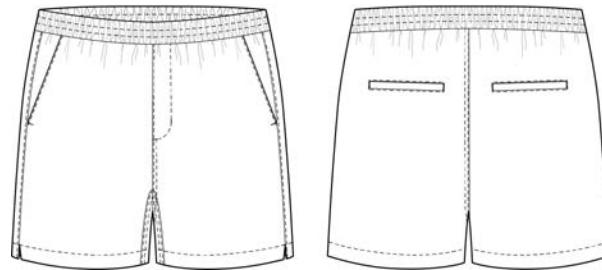
31864

Coral Orange

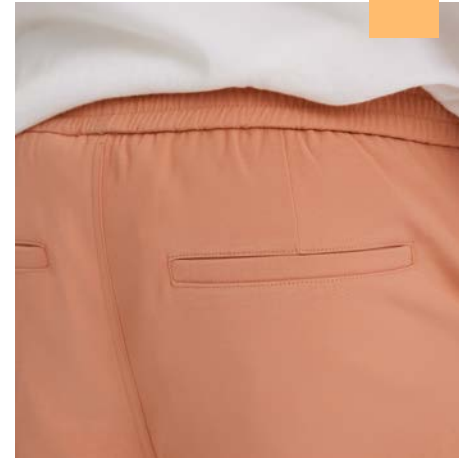
Composition:  
88% Polyester; 10%  
Viscose; 2% Elastane

Length:  
32, 34

Size: 28-38



TROUSERS  
COMFORT FIT  
MID-WAIST



# TURIPL SHORTS

Dessin 012

TuriPL Shorts are comfort-fit shorts in a casual look. An uncomplicated design with no unnecessary details underlines their minimal and enduring style. Complete with two slant front pockets, two welt back pockets, adjustable drawstring at the waist, flexible waistband and split detail on the side hem. Designed in Copenhagen and made by specialists in China.

Style

4044

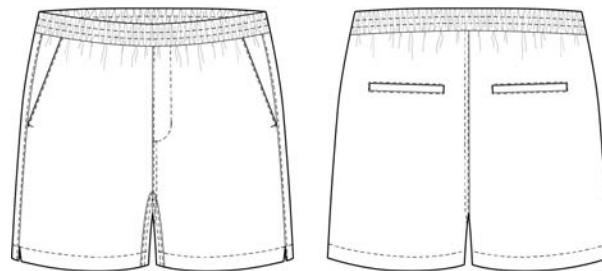
00902

Sand

Composition:  
88% Polyester; 10%  
Viscose; 2% Elastane

Length:  
32, 34

Size: 28-38



TROUSERS  
COMFORT FIT  
MID-WAIST



# TURIPL SHORTS

Dessin 012

TuriPL Shorts are comfort-fit shorts in a casual look. An uncomplicated design with no unnecessary details underlines their minimal and enduring style. Complete with two slant front pockets, two welt back pockets, adjustable drawstring at the waist, flexible waistband and split detail on the side hem. Designed in Copenhagen and made by specialists in China.

Style

4045

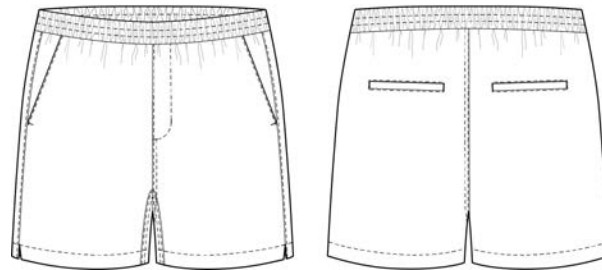
31065

Aqua Green

Composition:  
88% Polyester; 10%  
Viscose; 2% Elastane

Length:  
32, 34

Size: 28-38



TROUSERS  
COMFORT FIT  
MID-WAIST



# TURIPL SHORTS

Dessin 012

TuriPL Shorts are comfort-fit shorts in a casual look. An uncomplicated design with no unnecessary details underlines their minimal and enduring style. Complete with two slant front pockets, two welt back pockets, adjustable drawstring at the waist, flexible waistband and split detail on the side hem. Designed in Copenhagen and made by specialists in China.

Style

4045

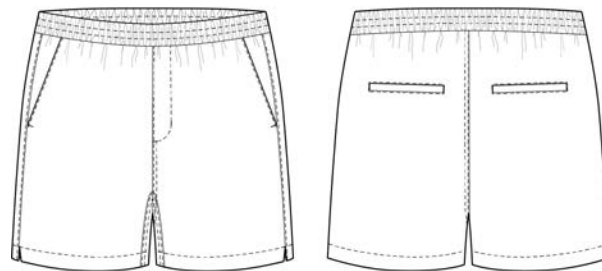
31168

Agave Green

Composition:  
88% Polyester; 10%  
Viscose; 2% Elastane

Length:  
32, 34

Size: 28-38



TROUSERS  
COMFORT FIT  
MID-WAIST



# TURIPL SHORTS

Dessin 026

TuriPL Shorts are comfort-fit shorts in a casual look. An uncomplicated design with no unnecessary details underlines their minimal and enduring style. Complete with two slant front pockets, two welt back pockets, adjustable drawstring at the waist, flexible waistband and split detail on the side hem. Designed in Copenhagen and made by specialists in China.

Style

4044

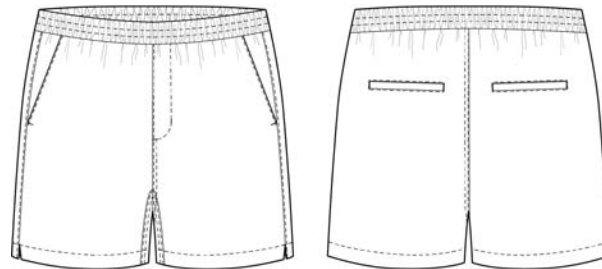
31063

Ocean Blue

Composition:  
88% Polyester; 10%  
Viscose; 2% Elastane

Length:  
32, 34

Size: 28-38



TROUSERS  
COMFORT FIT  
MID-WAIST



# TURIPL SHORTS

Dessin 026

TuriPL Shorts are comfort-fit shorts in a casual look. An uncomplicated design with no unnecessary details underlines their minimal and enduring style. Complete with two slant front pockets, two welt back pockets, adjustable drawstring at the waist, flexible waistband and split detail on the side hem. Designed in Copenhagen and made by specialists in China.

Style

4045

31267

Driftwood

Sand

Composition:  
88% Polyester; 10%  
Viscose; 2% Elastane

Length:  
32, 34

Size: 28-38

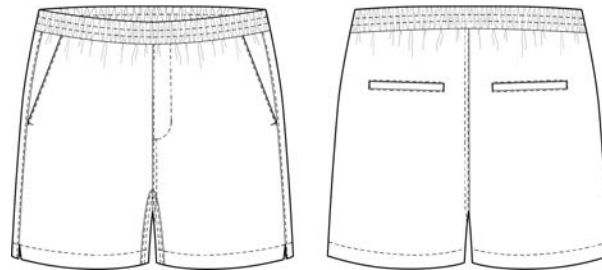


Image coming

TROUSERS  
COMFORT FIT  
MID-WAIST

# TURIPL SHORTS

Dessin 041

TuriPL Shorts are comfort-fit shorts in a casual look. An uncomplicated design with no unnecessary details underlines their minimal and enduring style. Complete with two slant front pockets, two welt back pockets, adjustable drawstring at the waist, flexible waistband and split detail on the side hem. Designed in Copenhagen and made by specialists in China.

Style

4029

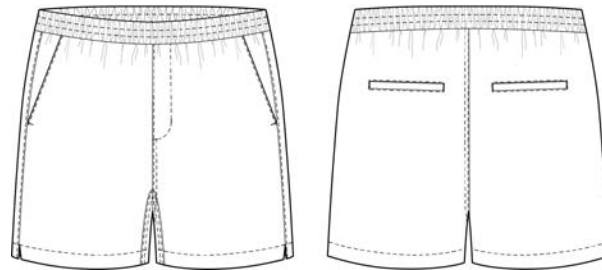
00401

Black

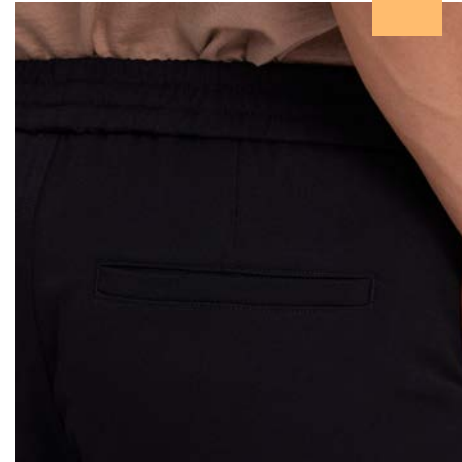
Composition:  
64% Polyester; 32%  
Viscose; 4% Elastane

Length:  
32, 34

Size: 28-38



TROUSERS  
COMFORT FIT  
MID-WAIST



# TURIPL SHORTS

Dessin 041

TuriPL Shorts are comfort-fit shorts in a casual look. An uncomplicated design with no unnecessary details underlines their minimal and enduring style. Complete with two slant front pockets, two welt back pockets, adjustable drawstring at the waist, flexible waistband and split detail on the side hem. Designed in Copenhagen and made by specialists in China.

Style

4044

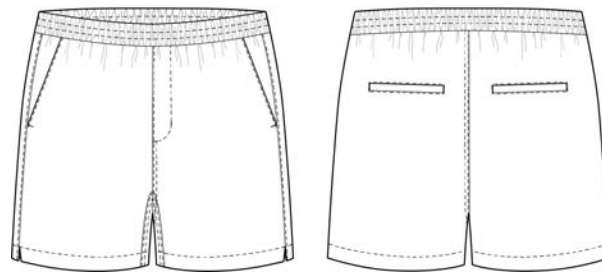
00303

Navy Blue

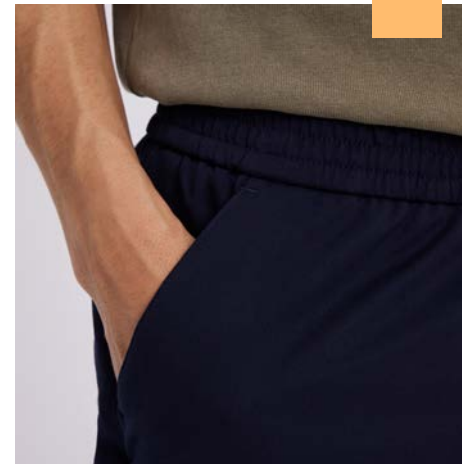
Composition:  
64% Polyester; 32%  
Viscose; 4% Elastane

Length:  
32, 34

Size: 28-38



TROUSERS  
COMFORT FIT  
MID-WAIST





NEWDAY.  
NEWFEELS.  
NEWTROUSERS.

PLAIN  
UNITS