

ELVINE



ELVINE

CITY FUNCTION JACKETS



MIRJA

Quality: Nylon Ripstop 5K
Style #: 331126
Color: DARK NAVY
Color Code: 240
Composition:
Shell 100% Nylon
Lining 100% Recycled Polyester
Padding 100% Recycled Polyester
Technical Fabric Info:
Water column: 5 000 mm
Impregnation: BIONIC-FINISH® ECO
Size and Fit: Relaxed fit
Technical Features:
WATERPROOF FABRIC
BIONIC-FINISH® ECO
VITAL SEAMS TAPED
WIND RESISTANT
VEGAN
Description:

MIRJA

Quality: Nylon Ripstop 5K
Style #: 331126
Color: SHELTER GREEN
Color Code: 055
Composition:
Shell 100% Nylon
Lining 100% Recycled Polyester
Padding 100% Recycled Polyester
Technical Fabric Info:
Water column: 5 000 mm
Impregnation: BIONIC-FINISH® ECO
Size and Fit: Relaxed fit
Technical Features:
WATERPROOF FABRIC
BIONIC-FINISH® ECO
VITAL SEAMS TAPED
WIND RESISTANT
VEGAN
Description:

MIRJA

Quality: Nylon Ripstop 5K
Style #: 331126
Color: ROSE
Color Code: 610
Composition:
Shell 100% Nylon
Lining 100% Recycled Polyester
Padding 100% Recycled Polyester
Technical Fabric Info:
Water column: 5 000 mm
Impregnation: BIONIC-FINISH® ECO
Size and Fit: Relaxed fit
Technical Features:
WATERPROOF FABRIC
BIONIC-FINISH® ECO
VITAL SEAMS TAPED
WIND RESISTANT
VEGAN
Description:

SALLIE

Quality: ReGrid 3K
Style #: 331333
Color: DARK NAVY
Color Code: 240
Composition:
Shell 100% Recycled Polyester
Lining 100% Recycled Polyester
Technical Fabric Info:
Water column: 3 000 mm
Breathability: 3 000mvp
Impregnation: BIONIC-FINISH® ECO
Size and Fit: Relaxed fit
Technical Features:
WATERPROOF FABRIC
BIONIC-FINISH® ECO
VITAL SEAMS TAPED
WIND RESISTANT
RECYCLED MATERIALS
COMFORT STRETCH
VEGAN
Description:

SALLIE

Quality: ReGrid 3K
Style #: 331333
Color: DEEP OLIVE
Color Code: 520
Composition:
Shell 100% Recycled Polyester
Lining 100% Recycled Polyester
Technical Fabric Info:
Water column: 3 000 mm
Breathability: 3 000mvp
Impregnation: BIONIC-FINISH® ECO
Size and Fit: Relaxed fit
Technical Features:
WATERPROOF FABRIC
BIONIC-FINISH® ECO
VITAL SEAMS TAPED
WIND RESISTANT
RECYCLED MATERIALS
COMFORT STRETCH
VEGAN
Description:

ELVINE



SALLIE

Quality: ReGrid 3K
Style #: 331333
Color: SEA FOAM
Color Code: 083
Composition:
Shell 100% Recycled Polyester
Lining 100% Recycled Polyester
Technical Fabric Info:
Water column: 3 000 mm
Breathability: 3 000mvp
Impregnation: BIONIC-FINISH® ECO
Size and Fit: Relaxed fit
Technical Features:
WATERPROOF FABRIC
BIONIC-FINISH® ECO
VITAL SEAMS TAPED
WIND RESISTANT
RECYCLED MATERIALS
COMFORT STRETCH
VEGAN
Description:

SALLIE

Quality: ReGrid 3K
Style #: 331333
Color: SOFT WHITE
Color Code: 178
Composition:
Shell 100% Recycled Polyester
Lining 100% Recycled Polyester
Technical Fabric Info:
Water column: 3 000 mm
Breathability: 3 000mvp
Impregnation: BIONIC-FINISH® ECO
Size and Fit: Relaxed fit
Technical Features:
WATERPROOF FABRIC
BIONIC-FINISH® ECO
VITAL SEAMS TAPED
WIND RESISTANT
RECYCLED MATERIALS
COMFORT STRETCH
VEGAN
Description:

POLLY

Quality: Matte Motion 3K
Style #: 331334
Color: BLACK
Color Code: 110
Composition:
Shell 50% Recycled Polyester 50% Polyester
Lining 100% Recycled Polyester
Technical Fabric Info:
Water column: 3 000 mm
Breathability: 3 000mvp
Impregnation: BIONIC-FINISH® ECO
Size and Fit:
Relaxed fit
Mid length
Technical Features:
WATERPROOF FABRIC
BIONIC-FINISH® ECO
VITAL SEAMS TAPED
WIND RESISTANT
PARTLY RECYCLED MATERIALS
COMFORT STRETCH
VEGAN
Description:

POLLY

Quality: Matte Motion 3K
Style #: 331334
Color: ARID EARTH
Color Code: 042
Composition:
Shell 50% Recycled Polyester 50% Polyester
Lining 100% Recycled Polyester
Technical Fabric Info:
Water column: 3 000 mm
Breathability: 3 000mvp
Impregnation: BIONIC-FINISH® ECO
Size and Fit:
Relaxed fit
Mid length
Technical Features:
WATERPROOF FABRIC
BIONIC-FINISH® ECO
VITAL SEAMS TAPED
WIND RESISTANT
PARTLY RECYCLED MATERIALS
COMFORT STRETCH
VEGAN
Description:

JONIE

Quality: PET Poly Light 5K
Style #: 331200
Color: BLACK
Color Code: 110
Composition:
Shell 100% Recycled Polyester
Lining 100% Recycled Polyester
Technical Fabric Info:
Water column: 5 000 mm
Impregnation: BIONIC-FINISH® ECO
Size and Fit:
Regular fit
Mid length
Straight silhouette
Technical Features:
WATERPROOF FABRIC
BIONIC-FINISH® ECO
VITAL SEAMS TAPED
WIND RESISTANT
RECYCLED MATERIALS
COMFORT STRETCH
VEGAN
Description:

ELVINE



JONIE

Quality: PET Poly Light 5K
 Style #: 331200
 Color: DARK NAVY
 Color Code: 240
 Composition:
 Shell 100% Recycled Polyester
 Lining 100% Recycled Polyester
 Technical Fabric Info:
 Water column: 5 000 mm
 Impregnation: BIONIC-FINISH® ECO
 Size and Fit:
 Regular fit
 Mid length
 Straight silhouette
 Technical Features:
 WATERPROOF FABRIC
 BIONIC-FINISH® ECO
 VITAL SEAMS TAPED
 WIND RESISTANT
 RECYCLED MATERIALS
 COMFORT STRETCH
 VEGAN
 Description:

JONIE

Quality: PET Poly Light 5K
 Style #: 331200
 Color: DEEP OLIVE
 Color Code: 520
 Composition:
 Shell 100% Recycled Polyester
 Lining 100% Recycled Polyester
 Technical Fabric Info:
 Water column: 5 000 mm
 Impregnation: BIONIC-FINISH® ECO
 Size and Fit:
 Regular fit
 Mid length
 Straight silhouette
 Technical Features:
 WATERPROOF FABRIC
 BIONIC-FINISH® ECO
 VITAL SEAMS TAPED
 WIND RESISTANT
 RECYCLED MATERIALS
 COMFORT STRETCH
 VEGAN
 Description:

JONIE

Quality: PET Poly Light 5K
 Style #: 331200
 Color: DUST KHAKE
 Color Code: 394
 Composition:
 Shell 100% Recycled Polyester
 Lining 100% Recycled Polyester
 Technical Fabric Info:
 Water column: 5 000 mm
 Impregnation: BIONIC-FINISH® ECO
 Size and Fit:
 Regular fit
 Mid length
 Straight silhouette
 Technical Features:
 WATERPROOF FABRIC
 BIONIC-FINISH® ECO
 VITAL SEAMS TAPED
 WIND RESISTANT
 RECYCLED MATERIALS
 COMFORT STRETCH
 VEGAN
 Description:

JONIE

Quality: PET Poly Light 5K
 Style #: 331200
 Color: SEA FOAM
 Color Code: 083
 Composition:
 Shell 100% Recycled Polyester
 Lining 100% Recycled Polyester
 Technical Fabric Info:
 Water column: 5 000 mm
 Impregnation: BIONIC-FINISH® ECO
 Size and Fit:
 Regular fit
 Mid length
 Straight silhouette
 Technical Features:
 WATERPROOF FABRIC
 BIONIC-FINISH® ECO
 VITAL SEAMS TAPED
 WIND RESISTANT
 RECYCLED MATERIALS
 COMFORT STRETCH
 VEGAN
 Description:

LIANDRA

Quality: Matte Motion 3K
 Style #: 331400
 Color: DARK NAVY
 Color Code: 240
 Composition:
 Shell 50% Recycled Polyester 50% Polyester
 Lining 100% Recycled Polyester
 Technical Fabric Info:
 Water column: 3 000 mm
 Breathability: 3 000mvp
 Impregnation: BIONIC-FINISH® ECO
 Size and Fit: Relaxed fit
 Technical Features:
 WATERPROOF FABRIC
 BIONIC-FINISH® ECO
 VITAL SEAMS TAPED
 WIND RESISTANT
 PARTLY RECYCLED MATERIALS
 COMFORT STRETCH
 VEGAN
 Description:

ELVINE



LIANDRA

Quality: Matte Motion 3K

Style #: 331400

Color: ARID EARTH

Color Code: 042

Composition:

Shell 50% Recycled Polyester 50% Polyester

Lining 100% Recycled Polyester

Technical Fabric Info:

Water column: 3 000 mm

Breathability: 3 000mvp

Impregnation: BIONIC-FINISH® ECO

Size and Fit: Relaxed fit

Technical Features:

WATERPROOF FABRIC

BIONIC-FINISH® ECO

VITAL SEAMS TAPED

WIND RESISTANT

PARTLY RECYCLED MATERIALS

COMFORT STRETCH

VEGAN

Description:

LIANDRA

Quality: Matte Motion 3K

Style #: 331400

Color: THATCH

Color Code: 214

Composition:

Shell 50% Recycled Polyester 50% Polyester

Lining 100% Recycled Polyester

Technical Fabric Info:

Water column: 3 000 mm

Breathability: 3 000mvp

Impregnation: BIONIC-FINISH® ECO

Size and Fit: Relaxed fit

Technical Features:

WATERPROOF FABRIC

BIONIC-FINISH® ECO

VITAL SEAMS TAPED

WIND RESISTANT

PARTLY RECYCLED MATERIALS

COMFORT STRETCH

VEGAN

Description:

LOVIS

Quality: Matte Motion 3K

Style #: 331327

Color: DARK NAVY

Color Code: 240

Composition:

Shell 50% Recycled Polyester 50% Polyester

Lining 100% Recycled Polyester

Technical Fabric Info:

Water column: 3 000 mm

Breathability: 3 000mvp

Impregnation: BIONIC-FINISH® ECO

Size and Fit:

Designed for a relaxed fit

If between sizes choose one size down

Dropped shoulder

Loose fit

Technical Features:

WATERPROOF FABRIC

BIONIC-FINISH® ECO

VITAL SEAMS TAPED

WIND RESISTANT

PARTLY RECYCLED MATERIALS

COMFORT STRETCH

VEGAN

Description:

LOVIS

Quality: Matte Motion 3K

Style #: 331327

Color: THATCH

Color Code: 214

Composition:

Shell 50% Recycled Polyester 50% Polyester

Lining 100% Recycled Polyester

Technical Fabric Info:

Water column: 3 000 mm

Breathability: 3 000mvp

Impregnation: BIONIC-FINISH® ECO

Size and Fit:

Designed for a relaxed fit

If between sizes choose one size down

Dropped shoulder

Loose fit

Technical Features:

WATERPROOF FABRIC

BIONIC-FINISH® ECO

VITAL SEAMS TAPED

WIND RESISTANT

PARTLY RECYCLED MATERIALS

COMFORT STRETCH

VEGAN

Description:

MELL

Quality: Cotton Guard 3K

Style #: 331341

Color: BLACK

Color Code: 110

Composition:

Shell 75% Cotton 25% Nylon

Lining 100% Nylon

Technical Fabric Info:

Water column: 3 000 mm

Breathability: 3 000mvp

Impregnation: BIONIC-FINISH® ECO

Size and Fit:

Relaxed fit

Dropped shoulder

Technical Features:

TRANSEASONAL

WATERPROOF FABRIC

BIONIC-FINISH® ECO

VITAL SEAMS TAPED

WIND RESISTANT

VEGAN

Description:

ELVINE



MELL

Quality: Cotton Guard 3K

Style #: 331341

Color: CINNAMON

Color Code: 416

Composition:

Shell 75% Cotton 25% Nylon

Lining 100% Nylon

Lining 100% Recycled Polyester

Technical Fabric Info:

Water column: 3 000 mm

Breathability: 3 000mvp

Impregnation: BIONIC-FINISH® ECO

Size and Fit:

Relaxed fit

Dropped shoulder

Technical Features:

TRANSEASONAL

WATERPROOF FABRIC

BIONIC-FINISH® ECO

VITAL SEAMS TAPED

WIND RESISTANT

VEGAN

Description:

ELVINE

SPRING JACKETS



EVELIN

Quality: Textured Cotton
Style #: 331332
Color: BLACK
Color Code: 110
Composition:
Shell 62% Cotton 38% Nylon
Lining 100% Recycled Polyester
Technical Fabric Info: Impregnation: BIONIC-FINISH® ECO
Size and Fit:
Relaxed fit
Dropped shoulder
Technical Features:
BIONIC-FINISH® ECO
VEGAN
Description:



EVELIN

Quality: Textured Cotton
Style #: 331332
Color: SAND
Color Code: 369
Composition:
Shell 62% Cotton 38% Nylon
Lining 100% Recycled Polyester
Technical Fabric Info: Impregnation: BIONIC-FINISH® ECO
Size and Fit:
Relaxed fit
Dropped shoulder
Technical Features:
BIONIC-FINISH® ECO
VEGAN
Description:



EVELIN

Quality: Textured Cotton
Style #: 331332
Color: ROSE
Color Code: 610
Composition:
Shell 62% Cotton 38% Nylon
Lining 100% Recycled Polyester
Technical Fabric Info: Impregnation: BIONIC-FINISH® ECO
Size and Fit:
Relaxed fit
Dropped shoulder
Technical Features:
BIONIC-FINISH® ECO
VEGAN
Description:



STACY

Quality: Peach Plain
Style #: 331328
Color: BLACK
Color Code: 110
Composition: Shell 75% Cotton 25% Nylon
Technical Fabric Info: Impregnation: BIONIC-FINISH® ECO
Size and Fit:
Relaxed fit
Dropped shoulder
Technical Features:
BIONIC-FINISH® ECO
VEGAN
Description: SALESMAN SAMPLE NOTE: Fitting to be sized down. Sample is as a size M.



STACY

Quality: Peach Plain
Style #: 331328
Color: THATCH
Color Code: 214
Composition: Shell 75% Cotton 25% Nylon
Technical Fabric Info: Impregnation: BIONIC-FINISH® ECO
Size and Fit:
Relaxed fit
Dropped shoulder
Technical Features:
BIONIC-FINISH® ECO
VEGAN
Description: SALESMAN SAMPLE NOTE: Fitting to be sized down. Sample is as a size M.

ELVINE



YARA

Quality: Double Face Cotton
Style #: 331140
Color: BLACK
Color Code: 110
Composition: Shell 100% Cotton
Size and Fit:
If between sizes choose one size down
Relaxed fit
Technical Features: VEGAN
Description:



YARA

Quality: Double Face Cotton
Style #: 331140
Color: KHAKI
Color Code: 134
Composition: Shell 100% Cotton
Size and Fit:
If between sizes choose one size down
Relaxed fit
Technical Features: VEGAN
Description:



NINON

Quality: Double Face Cotton
Style #: 331203
Color: BLACK
Color Code: 110
Composition:
Shell 100% Cotton
Lining 100% Polyester
Size and Fit:
If between sizes choose one size down
Relaxed fit
Technical Features: VEGAN
Description:



NINON

Quality: Double Face Cotton
Style #: 331203
Color: KHAKI
Color Code: 134
Composition:
Shell 100% Cotton
Lining 100% Polyester
Size and Fit:
If between sizes choose one size down
Relaxed fit
Technical Features: VEGAN
Description:



MAJLIS

Quality: Refined Cly / Li
Style #: 331330
Color: PAPERBAG
Color Code: 988
Composition:
Shell 81% Lyocell 19% Linen
Lining 100% Polyester
Size and Fit:
Relaxed fit
Dropped shoulder
Technical Features: VEGAN
Description: SALESMAN SAMPLE NOTE: Fitting to be sized down. Sample is as a size M.

ELVINE



MAJLIS

Quality: Refined Ciy / Li
Style #: 331330
Color: DARK NAVY
Color Code: 240
Composition:
Shell 81% Lyocell 19% Linen
Lining 100% Polyester
Size and Fit:
Relaxed fit
Dropped shoulder
Technical Features: VEGAN
Description: SALESMAN SAMPLE NOTE: Fitting to be sized down. Sample is as a size M.

LIORA

Quality: Refined Ciy / Li
Style #: 331414
Color: PAPERBAG
Color Code: 988
Composition:
Shell 81% Lyocell 19% Linen
Lining 100% Polyester
Size and Fit: Relaxed fit
Technical Features: VEGAN
Description:

ODELIA

Quality: Dobby Structure
Style #: 331026
Color: BLACK
Color Code: 110
Composition:
Shell 65% Polyester 35% Viscose
Lining 100% Polyester
Size and Fit:
Relaxed fit
Size down if you prefer a smaller fit
Technical Features: VEGAN
Description:

ODELIA

Quality: Dobby Structure
Style #: 331026
Color: OYSTER
Color Code: 575
Composition:
Shell 65% Polyester 35% Viscose
Lining 100% Polyester
Size and Fit:
Relaxed fit
Size down if you prefer a smaller fit
Technical Features: VEGAN
Description:

ELVINE

JERSEY TOPS



KAILYN

Quality: Co/Li Jersey
Style #: 331428
Color: DARK NAVY
Color Code: 240
Composition: Shell 70% Cotton 30% Linen
Size and Fit: Slim fit
Technical Features:
COMFORT STRETCH
VEGAN
Description:



KAILYN

Quality: Co/Li Jersey
Style #: 331428
Color: FADED ROSE
Color Code: 159
Composition: Shell 70% Cotton 30% Linen
Size and Fit: Slim fit
Technical Features:
COMFORT STRETCH
VEGAN
Description:



KAILYN

Quality: Co/Li Jersey
Style #: 331428
Color: LEMONADE
Color Code: 480
Composition: Shell 70% Cotton 30% Linen
Size and Fit: Slim fit
Technical Features:
COMFORT STRETCH
VEGAN
Description:



KAILYN

Quality: Co/Li Jersey
Style #: 331428
Color: VANILLA WHITE
Color Code: 445
Composition: Shell 70% Cotton 30% Linen
Size and Fit: Slim fit
Technical Features:
COMFORT STRETCH
VEGAN
Description:



REGAN

Quality: Co/Li Jersey
Style #: 331427
Color: DARK NAVY
Color Code: 240
Composition: Shell 70% Cotton 30% Linen
Size and Fit: Slim fit
Technical Features:
COMFORT STRETCH
VEGAN
Description:

ELVINE



REGAN

Quality: Co/Li Jersey
Style #: 331427
Color: **FADED ROSE**
Color Code: 159
Composition: Shell 70% Cotton 30% Linen
Size and Fit: Slim fit
Technical Features:
COMFORT STRETCH
VEGAN
Description:



REGAN

Quality: Co/Li Jersey
Style #: 331427
Color: **LEMONADE**
Color Code: 480
Composition: Shell 70% Cotton 30% Linen
Size and Fit: Slim fit
Technical Features:
COMFORT STRETCH
VEGAN
Description:



REGAN

Quality: Co/Li Jersey
Style #: 331427
Color: **VANILLA WHITE**
Color Code: 445
Composition: Shell 70% Cotton 30% Linen
Size and Fit: Slim fit
Technical Features:
COMFORT STRETCH
VEGAN
Description:



NOLA

Quality: Co/Li Jersey
Style #: 331420
Color: **DARK NAVY**
Color Code: 240
Composition: Shell 70% Cotton 30% Linen
Size and Fit: Relaxed fit
Technical Features:
COMFORT STRETCH
VEGAN
Description:



NOLA

Quality: Co/Li Jersey
Style #: 331420
Color: **FADED ROSE**
Color Code: 159
Composition: Shell 70% Cotton 30% Linen
Size and Fit: Relaxed fit
Technical Features:
COMFORT STRETCH
VEGAN
Description:

ELVINE



NOLA

Quality: Co/Li Jersey
Style #: 331420
Color: LEMONADE
Color Code: 480
Composition: Shell 70% Cotton 30% Linen
Size and Fit: Relaxed fit
Technical Features:
COMFORT STRETCH
VEGAN
Description:



NOLA

Quality: Co/Li Jersey
Style #: 331420
Color: VANILLA WHITE
Color Code: 445
Composition: Shell 70% Cotton 30% Linen
Size and Fit: Relaxed fit
Technical Features:
COMFORT STRETCH
VEGAN
Description:



UNN

Quality: Double-Faced Jersey
Style #: 330706
Color: BLACK
Color Code: 110
Composition: Shell 96% Cotton 4% Elastane
Size and Fit: Relaxed fit
Technical Features:
STRETCH
VEGAN
Description:



UNN

Quality: Double-Faced Jersey
Style #: 330706
Color: OFFWHITE
Color Code: 101
Composition: Shell 96% Cotton 4% Elastane
Size and Fit: Relaxed fit
Technical Features:
STRETCH
VEGAN
Description:



UNN

Quality: Double-Faced Jersey
Style #: 330706
Color: HERBAL GREEN
Color Code: 143
Composition: Shell 96% Cotton 4% Elastane
Size and Fit: Relaxed fit
Technical Features:
STRETCH
VEGAN
Description:

ELVINE



ALARIC PRINT

Quality: Combed Cotton

Style #: 331429

Color: DARK COFFEE

Color Code: 994

Composition: Shell 100% Cotton

Size and Fit: Relaxed fit

Technical Features:

COMFORT STRETCH

VEGAN

Description: SALESMAN SAMPLE NOTE:

ELVINE part of print at upper back will be changed into the ELVINE logo.



ALARIC PRINT

Quality: Combed Cotton

Style #: 331429

Color: AMBER

Color Code: 989

Composition: Shell 100% Cotton

Size and Fit: Relaxed fit

Technical Features:

COMFORT STRETCH

VEGAN

Description: SALESMAN SAMPLE NOTE:

ELVINE part of print at upper back will be changed into the ELVINE logo.



ALARIC PRINT

Quality: Combed Cotton

Style #: 331429

Color: SHELL

Color Code: 569

Composition: Shell 100% Cotton

Size and Fit: Relaxed fit

Technical Features:

COMFORT STRETCH

VEGAN

Description: SALESMAN SAMPLE NOTE:

ELVINE part of print at upper back will be changed into the ELVINE logo.

ELVINE

SWEATSHIRTS



ALBA

Quality: Double Face Knit
Style #: 331226
Color: BLACK
Color Code: 110
Composition: Shell 74% Organic cotton 20%
Recycled Polyester 6% Elastane
Size and Fit:
Wide sleeves
Relaxed fit
Dropped shoulder
Technical Features:
PARTLY RECYCLED MATERIALS
ORGANIC COTTON
COMFORT STRETCH
VEGAN
Description:



ALBA

Quality: Double Face Knit
Style #: 331226
Color: SOIL
Color Code: 119
Composition: Shell 74% Organic cotton 20%
Recycled Polyester 6% Elastane
Size and Fit:
Wide sleeves
Relaxed fit
Dropped shoulder
Technical Features:
PARTLY RECYCLED MATERIALS
ORGANIC COTTON
COMFORT STRETCH
VEGAN
Description:



ALBA

Quality: Double Face Knit
Style #: 331226
Color: ROSE
Color Code: 610
Composition: Shell 74% Organic cotton 20%
Recycled Polyester 6% Elastane
Size and Fit:
Wide sleeves
Relaxed fit
Dropped shoulder
Technical Features:
PARTLY RECYCLED MATERIALS
ORGANIC COTTON
COMFORT STRETCH
VEGAN
Description:



ALBA

Quality: Double Face Knit
Style #: 331226
Color: OYSTER PINK
Color Code: 647
Composition: Shell 74% Organic cotton 20%
Recycled Polyester 6% Elastane
Size and Fit:
Wide sleeves
Relaxed fit
Dropped shoulder
Technical Features:
PARTLY RECYCLED MATERIALS
ORGANIC COTTON
COMFORT STRETCH
VEGAN
Description:



ALBA

Quality: Double Face Knit
Style #: 331226
Color: LIGHT GREEN
Color Code: 125
Composition: Shell 74% Organic cotton 20%
Recycled Polyester 6% Elastane
Size and Fit:
Wide sleeves
Relaxed fit
Dropped shoulder
Technical Features:
PARTLY RECYCLED MATERIALS
ORGANIC COTTON
COMFORT STRETCH
VEGAN
Description:

ELVINE



ALBA

Quality: Double Face Knit

Style #: 331226

Color: SOFT WHITE

Color Code: 178

Composition: Shell 74% Organic cotton 20%

Recycled Polyester 6% Elastane

Size and Fit:

Wide sleeves

Relaxed fit

Dropped shoulder

Technical Features:

PARTLY RECYCLED MATERIALS

ORGANIC COTTON

COMFORT STRETCH

VEGAN

Description:

ELVINE

KNITS



ISA

Quality: Pointelle Cotton
Style #: 331349
Color: BLACK
Color Code: 110
Composition: Shell 100% Cotton
Size and Fit:
Wide sleeves
Relaxed fit
Dropped shoulder
Technical Features:
ORGANIC COTTON
COMFORT STRETCH
VEGAN
Description:



ISA

Quality: Pointelle Cotton
Style #: 331349
Color: DARK COFFEE
Color Code: 994
Composition: Shell 100% Cotton
Size and Fit:
Wide sleeves
Relaxed fit
Dropped shoulder
Technical Features:
ORGANIC COTTON
COMFORT STRETCH
VEGAN
Description:



ISA

Quality: Pointelle Cotton
Style #: 331349
Color: OFFWHITE
Color Code: 101
Composition: Shell 100% Cotton
Size and Fit:
Wide sleeves
Relaxed fit
Dropped shoulder
Technical Features:
ORGANIC COTTON
COMFORT STRETCH
VEGAN
Description:



HEDDA

Quality: Soft Cotton Mix
Style #: 331352
Color: LIGHT GREEN
Color Code: 125
Composition: Shell 57% Cotton 43% Recycled
Polyester
Size and Fit:
Wide sleeves
Regular fit
Technical Features:
PARTLY RECYCLED MATERIALS
COMFORT STRETCH
VEGAN
Description:



HEDDA

Quality: Soft Cotton Mix
Style #: 331352
Color: SOFT WHITE
Color Code: 178
Composition: Shell 57% Cotton 43% Recycled
Polyester
Size and Fit:
Wide sleeves
Regular fit
Technical Features:
PARTLY RECYCLED MATERIALS
COMFORT STRETCH
VEGAN
Description:

ELVINE



FRANCES

Quality: Soft Cotton Mix
Style #: 331351
Color: LIGHT GREEN
Color Code: 125
Composition: Shell 57% Cotton 43% Recycled Polyester
Size and Fit: Wide sleeves
Relaxed fit
Dropped shoulder
Technical Features:
PARTLY RECYCLED MATERIALS
COMFORT STRETCH
VEGAN
Description:



FRANCES

Quality: Soft Cotton Mix
Style #: 331351
Color: SOFT WHITE
Color Code: 178
Composition: Shell 57% Cotton 43% Recycled Polyester
Size and Fit: Wide sleeves
Relaxed fit
Dropped shoulder
Technical Features:
PARTLY RECYCLED MATERIALS
COMFORT STRETCH
VEGAN
Description:



DEBBY

Quality: Cotton Lin Mix
Style #: 331348
Color: BLACK
Color Code: 110
Composition: Shell 45% Cotton 35% Linen 20% Polyester
Size and Fit: Regular fit
Technical Features:
COMFORT STRETCH
VEGAN
Description:



DEBBY

Quality: Cotton Lin Mix
Style #: 331348
Color: OFFWHITE
Color Code: 101
Composition: Shell 45% Cotton 35% Linen 20% Polyester
Size and Fit: Regular fit
Technical Features:
COMFORT STRETCH
VEGAN
Description:



EMMELINE

Quality: Cotton Lin Mix
Style #: 331350
Color: BLACK
Color Code: 110
Composition: Shell 45% Cotton 35% Linen 20% Polyester
Size and Fit: Wide sleeves
Regular fit
Technical Features:
COMFORT STRETCH
VEGAN
Description:

ELVINE



EMMELINE

Quality: Cotton Lin Mix

Style #: 331350

Color: OFFWHITE

Color Code: 101

Composition: Shell 45% Cotton 35% Linen 20%

Polyester

Size and Fit:

Wide sleeves

Regular fit

Technical Features:

COMFORT STRETCH

VEGAN

Description:

ELVINE

BLOUSES AND DRESSES



ELIANA

Quality: Garment Dyed Lyocell

Style #: 331381

Color: DARK COFFEE

Color Code: 994

Composition: Shell 100% Lyocell

Size and Fit: Relaxed fit

Technical Features: VEGAN

Description: SALESMAN SAMPLE NOTE: Fitting to be sized down one size.

ELIANA

Quality: Garment Dyed Lyocell

Style #: 331381

Color: SAND GREY

Color Code: 602

Composition: Shell 100% Lyocell

Size and Fit: Relaxed fit

Technical Features: VEGAN

Description: SALESMAN SAMPLE NOTE: Fitting to be sized down one size.

ELIANA

Quality: Garment Dyed Lyocell

Style #: 331381

Color: OFFWHITE

Color Code: 101

Composition: Shell 100% Lyocell

Size and Fit: Relaxed fit

Technical Features: VEGAN

Description: SALESMAN SAMPLE NOTE: Fitting to be sized down one size.

ANNLIS

Quality: Lyocell

Style #: 331284

Color: BLACK

Color Code: 110

Composition: Shell 100% Lyocell

Size and Fit: Relaxed fit

Technical Features: VEGAN

Description:

ANNLIS

Quality: Lyocell

Style #: 331284

Color: GANACHE

Color Code: 145

Composition: Shell 100% Lyocell

Size and Fit: Relaxed fit

Technical Features: VEGAN

Description:

ELVINE



ANNLIS

Quality: Garment Dyed Lyocell
Style #: 331433
Color: SAND GREY
Color Code: 602
Composition: Shell 100% Lyocell
Size and Fit: Relaxed fit
Technical Features: VEGAN
Description:



ANNLIS

Quality: Garment Dyed Lyocell
Style #: 331433
Color: OFFWHITE
Color Code: 101
Composition: Shell 100% Lyocell
Size and Fit: Relaxed fit
Technical Features: VEGAN
Description:



MILENA

Quality: Modal Blend
Style #: 331121
Color: BLACK
Color Code: 110
Composition: Shell 87% Modal 13% Polyester
Size and Fit:
Designed for a relaxed fit
If between sizes choose one size down
Relaxed fit
Technical Features: VEGAN
Description:



MILENA

Quality: Modal Blend
Style #: 331121
Color: CINNAMON
Color Code: 416
Composition: Shell 87% Modal 13% Polyester
Size and Fit:
Designed for a relaxed fit
If between sizes choose one size down
Relaxed fit
Technical Features: VEGAN
Description:



JOCELINE

Quality: Slub Stripe
Style #: 331366
Color: SAND
Color Code: 369
Composition: Shell 42% Polyester 35% Linen 22%
Viscose 1% Elastane
Size and Fit: Relaxed fit
Technical Features: VEGAN
Description:

ELVINE



NOELLE

Quality: Clear Poplin
Style #: 331415
Color: LIGHT BLUE
Color Code: 149
Composition: Shell 75% Cotton 25% Polyester
Size and Fit:
Designed for a relaxed fit
Size down if you prefer a smaller fit
Technical Features: VEGAN
Description:



NOELLE

Quality: Clear Poplin
Style #: 331415
Color: COCOA BROWN
Color Code: 046
Composition: Shell 75% Cotton 25% Polyester
Size and Fit:
Designed for a relaxed fit
Size down if you prefer a smaller fit
Technical Features: VEGAN
Description:



NOELLE

Quality: Poplin Stripe
Style #: 331385
Color: BEIGE STRIPE
Color Code: 746
Composition:
Shell 100% Cotton
Size and Fit: Relaxed fit
Technical Features: VEGAN
Description:



NOELLE

Quality: Poplin Stripe
Style #: 331385
Color: BLUE STRIPE
Color Code: 590
Composition:
Shell 100% Cotton
Size and Fit: Relaxed fit
Technical Features: VEGAN
Description:



GULLVI

Quality: Pure Linen Lyocell
Style #: 331435
Color: BLACK
Color Code: 110
Composition: Shell 82% Lyocell 18% Linen
Size and Fit:
Wide sleeves
Relaxed fit
Mid length
Technical Features: VEGAN
Description:

ELVINE



GULLVI

Quality: Pure Linen Lyocell
Style #: 331435
Color: CINNAMON
Color Code: 416
Composition: Shell 82% Lyocell 18% Linen
Size and Fit:
Wide sleeves
Relaxed fit
Mid length
Technical Features: VEGAN
Description:



CALINA

Quality: Pure Linen Lyocell
Style #: 331360
Color: BLACK
Color Code: 110
Composition: Shell 82% Lyocell 18% Linen
Size and Fit:
Regular fit
Calf length
Technical Features: VEGAN
Description:



CALINA

Quality: Pure Linen Lyocell
Style #: 331360
Color: CINNAMON
Color Code: 416
Composition: Shell 82% Lyocell 18% Linen
Size and Fit:
Regular fit
Calf length
Technical Features: VEGAN
Description:



JAYLENE

Quality: Garment Dyed Lyocell
Style #: 331361
Color: DARK COFFEE
Color Code: 994
Composition: Shell 100% Lyocell
Size and Fit:
Regular fit
Calf length
Technical Features: VEGAN
Description:



JAYLENE

Quality: Garment Dyed Lyocell
Style #: 331361
Color: SAND GREY
Color Code: 602
Composition: Shell 100% Lyocell
Size and Fit:
Regular fit
Calf length
Technical Features: VEGAN
Description:

ELVINE



MAUREEN

Quality: Modal Blend
Style #: 331160
Color: BLACK
Color Code: 110
Composition: Shell 87% Modal 13% Polyester
Size and Fit:
A-line silhouette
Regular fit
Technical Features: VEGAN
Description:

MAUREEN

Quality: Modal Blend
Style #: 331160
Color: CINNAMON
Color Code: 416
Composition: Shell 87% Modal 13% Polyester
Size and Fit:
A-line silhouette
Regular fit
Technical Features: VEGAN
Description:

ELVINE

SHORTS



ALIRA

Quality: Slub Stripe
Style #: 331387
Color: SAND
Color Code: 369
Composition: Shell 42% Polyester 35% Linen 22%
Viscose 1% Elastane
Size and Fit:
Regular fit
Regular to high waist
Technical Features: VEGAN
Description:



ALIRA

Quality: Refined Cty / Li
Style #: 331419
Color: DARK NAVY
Color Code: 240
Composition:
Shell 81% Lyocell 19% Linen
Lining 100% Polyester
Size and Fit:
Regular fit
Regular to high waist
Technical Features: VEGAN
Description:



ALIRA

Quality: Refined Cty / Li
Style #: 331419
Color: BEIGE
Color Code: 133
Composition:
Shell 81% Lyocell 19% Linen
Lining 100% Polyester
Size and Fit:
Regular fit
Regular to high waist
Technical Features: VEGAN
Description:

ELVINE

PANTS



LYNELLE

Quality: Slub Stripe
Style #: 331416
Color: SAND
Color Code: 369
Composition: Shell 42% Polyester 35% Linen 22%
Viscose 1% Elastane
Size and Fit:
Full length
Relaxed fit with regular waist
Wide leg
Technical Features: VEGAN
Description:

LYNELLE

Quality: Refined Cly / Li
Style #: 331417
Color: DARK NAVY
Color Code: 240
Composition:
Shell 81% Lyocell 19% Linen
Lining 100% Polyester
Size and Fit:
Full length
Relaxed fit with regular waist
Wide leg
Technical Features: VEGAN
Description:

LYNELLE

Quality: Refined Cly / Li
Style #: 331417
Color: PAPERBAG
Color Code: 988
Composition:
Shell 81% Lyocell 19% Linen
Lining 100% Polyester
Size and Fit:
Full length
Relaxed fit with regular waist
Wide leg
Technical Features: VEGAN
Description:

LYNELLE

Quality: Refined Cly / Li
Style #: 331417
Color: BEIGE
Color Code: 133
Composition:
Shell 81% Lyocell 19% Linen
Lining 100% Polyester
Size and Fit:
Full length
Relaxed fit with regular waist
Wide leg
Technical Features: VEGAN
Description:

LANA

Quality: Modal Blend
Style #: 331220
Color: BLACK
Color Code: 110
Composition: Shell 87% Modal 13% Polyester
Size and Fit:
Full length
If between sizes choose one size down
Regular to high waist
Technical Features: VEGAN
Description: SALESMAN SAMPLE NOTE: Waist
when relaxed to be decreased in width.

ELVINE



LANA

Quality: Modal Blend
Style #: 331220
Color: CINNAMON
Color Code: 416
Composition: Shell 87% Modal 13% Polyester
Size and Fit:
Full length
If between sizes choose one size down
Regular to high waist
Technical Features: VEGAN
Description: SALESMAN SAMPLE NOTE: Waist when relaxed to be decreased in width.



ALAYA

Quality: Lyocell
Style #: 331299
Color: BLACK
Color Code: 110
Composition: Shell 100% Lyocell
Size and Fit:
Full length
If between sizes choose one size down
Relaxed fit with regular waist
Wide leg
Technical Features: VEGAN
Description:



ALAYA

Quality: Lyocell
Style #: 331299
Color: GANACHE
Color Code: 145
Composition: Shell 100% Lyocell
Size and Fit:
Full length
If between sizes choose one size down
Relaxed fit with regular waist
Wide leg
Technical Features: VEGAN
Description:



ALAYA

Quality: Garment Dyed Lyocell
Style #: 331434
Color: SAND GREY
Color Code: 602
Composition: Shell 100% Lyocell
Size and Fit:
Full length
If between sizes choose one size down
Relaxed fit with regular waist
Wide leg
Technical Features: VEGAN
Description:



LILJA

Quality: Light Flex
Style #: 331254
Color: BLACK
Color Code: 110
Composition: Shell 62% Polyester 33% Viscose 5% Elastane
Size and Fit:
Full length
Relaxed fit with regular waist
Straight leg
Technical Features:
COMFORT STRETCH
VEGAN
Description:

ELVINE



LILJA

Quality: Light Flex
Style #: 331254
Color: DARK NAVY
Color Code: 240
Composition: Shell 62% Polyester 33% Viscose
5% Elastane
Size and Fit:
Full length
Relaxed fit with regular waist
Straight leg
Technical Features:
COMFORT STRETCH
VEGAN
Description: SALESMAN SAMPLE NOTE: Belt loops will be added in production.



LILJA

Quality: Light Flex
Style #: 331254
Color: DARK SAND
Color Code: 545
Composition: Shell 62% Polyester 33% Viscose
5% Elastane
Size and Fit:
Full length
Relaxed fit with regular waist
Straight leg
Technical Features:
COMFORT STRETCH
VEGAN
Description:



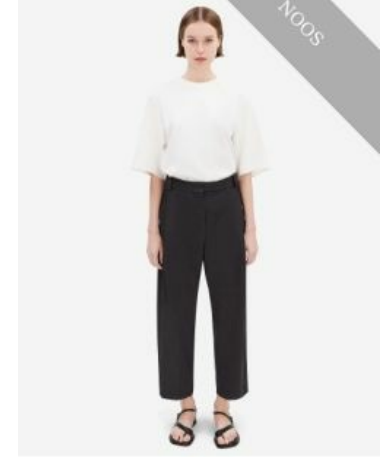
SANDI LIGHT

Quality: Light Flex
Style #: 330287
Color: BLACK
Color Code: 110
Composition: Shell 62% Polyester 33% Viscose
5% Elastane
Size and Fit:
Cropped leg
Relaxed legs
Regular fit
Technical Features:
COMFORT STRETCH
VEGAN
Description: NEW PRICE FOR FW24



SANDI LIGHT

Quality: Light Flex
Style #: 330287
Color: DARK NAVY
Color Code: 240
Composition: Shell 62% Polyester 33% Viscose
5% Elastane
Size and Fit:
Cropped leg
Relaxed legs
Regular fit
Technical Features:
COMFORT STRETCH
VEGAN
Description:



SANDI LIGHT

Quality: Light Flex
Style #: 330287
Color: DARK GREY MELANGE
Color Code: 212
Composition: Shell 62% Polyester 33% Viscose
5% Elastane
Size and Fit:
Cropped leg
Relaxed legs
Regular fit
Technical Features:
COMFORT STRETCH
VEGAN
Description: NEW PRICE FOR FW24

ELVINE



SANDI LIGHT

Quality: Light Flex
Style #: 330287
Color: SHELTER GREEN
Color Code: 055
Composition: Shell 62% Polyester 33% Viscose
5% Elastane
Size and Fit:
Cropped leg
Relaxed legs
Regular fit
Technical Features:
COMFORT STRETCH
VEGAN
Description: NEW PRICE FOR FW24



SANDI LIGHT

Quality: Light Flex
Style #: 330287
Color: BURNT WOOD
Color Code: 047
Composition: Shell 62% Polyester 33% Viscose
5% Elastane
Size and Fit:
Cropped leg
Relaxed legs
Regular fit
Technical Features:
COMFORT STRETCH
VEGAN
Description: NEW PRICE FOR FW24



SANDI LIGHT

Quality: Light Flex
Style #: 330287
Color: DARK SAND
Color Code: 545
Composition: Shell 62% Polyester 33% Viscose
5% Elastane
Size and Fit:
Cropped leg
Relaxed legs
Regular fit
Technical Features:
COMFORT STRETCH
VEGAN
Description: NEW PRICE FOR FW24



SANDI LIGHT

Quality: Light Flex
Style #: 330287
Color: PALE SMOKE
Color Code: 882
Composition: Shell 62% Polyester 33% Viscose
5% Elastane
Size and Fit:
Cropped leg
Relaxed legs
Regular fit
Technical Features:
COMFORT STRETCH
VEGAN
Description: NEW PRICE FOR FW24



HELMI

Quality: Dobby Structure
Style #: 330931
Color: BLACK
Color Code: 110
Composition: Shell 65% Polyester 35% Viscose
Size and Fit:
Cropped leg
Straight leg
Regular waist
Technical Features: VEGAN
Description:

ELVINE



HELMI

Quality: Dobby Structure

Style #: 330931

Color: OYSTER

Color Code: 575

Composition: Shell 65% Polyester 35% Viscose

Size and Fit:

Cropped leg

Straight leg

Regular waist

Technical Features: VEGAN

Description:

ELVINE

ACCESSORIES



HIUMAA TOWEL

Quality: Botanic Jacquard
Style #: 331436
Color: SAND GREY
Color Code: 602
Composition: Shell 100% Cotton
Technical Features: VEGAN
Description:



ELVINE LOGO CAP

Style #: 331493
Color: BLACK
Color Code: 110
Description:



ELVINE LOGO CAP

Style #: 331493
Color: LIGHT GREEN
Color Code: 125
Description:



ELVINE LOGO CAP

Style #: 331493
Color: SAND
Color Code: 369
Description:



ELVINE LOGO CAP

Style #: 331493
Color: LEMONADE
Color Code: 480
Description:

ELVINE



ELVINE LOGO CAP

Style #: 331493
Color: NAVY
Color Code: 140
Description:

ELVINE LOGO CAP

Style #: 331493
Color: SKY BLUE
Color Code: 897
Description: